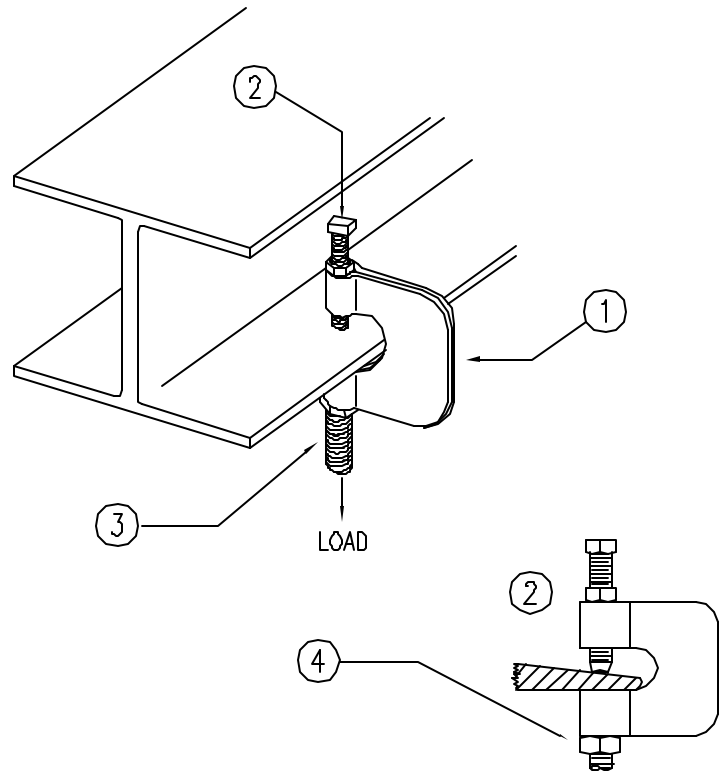
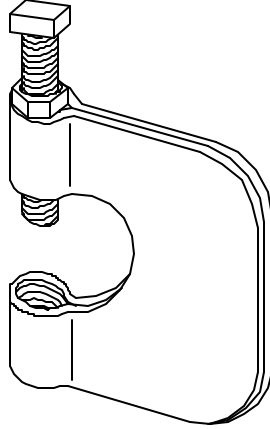




INSTALLATION

INSTALLATION INSTRUCTIONS

STEEL C-CLAMP MODEL #200



FEATURES

Structural attachment to metal beams, purlins, channel or angle iron to support hanger rods.

Location of threaded rod insertion permits easy attachment to other fixtures.

MODEL NUMBER	DESCRIPTION	MAX. PIPE DIA. SUPPORTED BY CLAMP & THREADED ROD	ROD SIZE	MAX. RECOM. LOAD LBS.
200	Steel C-Clamp used to secure threaded rod to structure	3-1/2"	3/8"	250
200	Steel C-Clamp used to secure threaded rod to structure	8"	1/2"	760

1. Position Clamp on beam.

2. Tighten screw. Set screw must be tightened onto sloped side of I-beam, channel or angle iron flange and torqued to 60 inch pounds for the 3/8" rod size and 125 inch pounds for the 1/2" rod size. Lock nut required to resist vibration.

3. Insert rod into threaded hole at the base of clamp.

4. Lock rod in place with jam nut.

WARNING:

1. All pipe supports, hangers, intermediate components and structural attachments must ONLY be used to support pipe, tubing or conduit as stated herein and are NEVER to be used for any other purpose.
2. All pipe supports and hangers are designed ONLY for STATIONARY piping unless otherwise noted.
3. All supports, hangers, clamps and accessories shown to use two nuts on the hanger rod or a jam nut must have nuts tightened securely to assure proper performance.
4. FIRE PROTECTION: follow requirements of National Fire Protection Assoc. NFPA pamphlets 11, 12, 13, 14, 15, 16, 17, & Factory Mutual Property Loss Prevention Data Sheet No. 2-8N.
5. Fasteners must be used only in the manner depicted in the illustrations that accompany it and must not exceed static load ratings noted.
6. Fasteners are designed for use with a variety of industry standard building materials, structural shapes, and mechanical components. For the fastener to work properly, these items must meet the appropriate industry standards. (Examples: ANSI, AISC, AISI)
7. The buyer and/or installer is responsible for:
 - a. Application in conformance to local codes.
 - b. The integrity of structures to which the fasteners is attached, including their capability of safely accepting the loads imposed, as evaluated by a qualified engineer.
 - c. Using appropriate industry standard hardware as noted above.
8. Failure to observe these specifications may cause product malfunction resulting in property damage or bodily injury. ERICO Products at the time of shipment are warranted to conform to any applicable written description furnished to the Buyer by ERICO, and to be free from defects in material and workmanship. NO OTHER WARRANTY, WHETHER EXPRESSED OR IMPLIED, (INCLUDING ANY WARRANTY OF MERCHANT-ABILITY OR FITNESS), SHALL EXIST IN CONNECTION WITH THE SALE OR USE OF ANY ERICO PRODUCT.

SAFETY INSTRUCTIONS: All safety regulations required by the job site must be observed. Special attention should be given to the following instructions. While working on or on the job site:

1. Observe all Federal and local safety regulations.
2. Wear safety glasses with side shields.
3. Be aware of personnel working above and below.
4. Wear a hard hat.
5. Wear gloves to avoid splinters and cuts.
6. When working above ground level, be sure the structure will support your weight.

TECHNICAL SUPPORT PHONE:
(800) 25-CADDY
(1-800-252-2339)
www.erico.com



©2001 ERICO, INC.

CFS290C

PRINTED IN U.S.A.