

# T-Series Vertical Sleeve



## FEATURES

Designed to connect vertical reinforcing bars and angular reinforcing bars greater than 45 degrees

Used to splice the same diameter bars

Works with saw cut, flame cut and sheared bars

Can be visually inspected after installation

Available with extended sleeve lengths

## SPECIFICATIONS

**Finish:** Plain

**Material:** Steel

**100% U.S. Domestic Content:** Yes

Table 1/2

Catalog Number	Sleeve	Rebar Size, US	Rebar Size, Canada	Diameter 1 (Ø1)	Diameter 2 (Ø2)	Length 1 (L1)
RBT5101A	Standard Length	#5	15M	1.38"	0.88"	4"
RBT6101A	Standard Length	#6	20M	1 1/2"	1"	5"
RBT51012A	Extended Length	#5	15M	1.38"	0.88"	6"
RBT7101A	Standard Length	#7		1.63"	1.13"	5"

CatalogNumber	Sleeve	Rebar Size, US	Rebar Size, Canada	Diameter 1(Ø1)	Diameter 2(Ø2)	Length 1 (L1)
RBT61011A	Extended Length	#6	20M	1 1/2"	1"	6"
RBT61012A	Extended Length	#6	20M	1 1/2"	1"	7"
RBT8101A	Standard Length	#8	25M	1.88"	1 1/4"	5"
RBT9101A	Standard Length	#9	30M	2.13"	1 1/2"	5"
RBT81011A	Extended Length	#8	25M	1.88"	1 1/4"	6"
RBT1091A	Standard Length	#10		2 1/4"	1.63"	5 1/2"
RBT91011A	Extended Length	#9	30M	2.13"	1 1/2"	6"
RBT91012A	Extended Length	#9	30M	2.13"	1 1/2"	7"
RBT10911A	Extended Length	#10		2 1/4"	1.63"	6 1/2"
RBT111011A	Extended Length	#11	35M	2 1/2"	1 3/4"	7"
RBT111012A	Extended Length	#11	35M	2 1/2"	1 3/4"	8"
RBT11101A	Standard Length	#11	35M	2 1/2"	1 3/4"	6"
RBT121018A	Extended Length	#12		2 3/4"	1.88"	8"
RBT12917A	Standard Length	#12		2 3/4"	1.88"	7"
RBW4117A	Standard Length			2.88"	2"	7"
RBT141011A	Extended Length	#14	45M	3"	2.13"	8"
RBT141012A	Extended Length	#14	45M	3"	2.13"	9"
RBT14101A	Standard Length	#14	45M	3"	2.13"	7"

CatalogNumber	Sleeve	Rebar Size, US	Rebar Size, Canada	Diameter 1(Ø1)	Diameter 2(Ø2)	Length 1 (L1)
RBW45510A	Extended Length			2.38"	2.38"	10"
RBW4558A	Standard Length			3.38"	2.38"	8"
RBT18911A	Extended Length	#18	55M	3 3/4"	2.63"	10"
RBT1891A	Standard Length	#18	55M	3 3/4"	2.63"	9"

Table 2/2

Catalog Number	Length 2 (L2)	Unit Weight
RBT5101A	2"	1 lb
RBT6101A	2 1/2"	1.4 lb
RBT51012A	3"	1.5 lb
RBT7101A	2 1/2"	1.5 lb
RBT61011A	3"	1.7 lb
RBT61012A	3 1/2"	2 lb
RBT8101A	2 1/2"	2.22 lb
RBT9101A	2 1/2"	2.5 lb
RBT81011A	3"	3 lb
RBT1091A	2 3/4"	3 lb
RBT91011A	3"	3 lb
RBT91012A	3 1/2"	3.5 lb
RBT10911A	3 1/4"	3.5 lb

Catalog Number	Length 2 (L2)	Unit Weight
RBT111011A	3 1/2"	5 lb
RBT111012A	4"	5.7 lb
RBT11101A	3"	4.3 lb
RBT121018A	4"	7.2 lb
RBT12917A	3 1/2"	6.3 lb
RBW4117A	3 1/2"	6.6 lb
RBT141011A	4"	8 lb
RBT141012A	4 1/2"	9 lb
RBT14101A	3 1/2"	7 lb
RBW45510A	5"	12.8 lb
RBW4558A	4"	10.2 lb
RBT18911A	5"	16 lb
RBT1891A	4 1/2"	14.4 lb

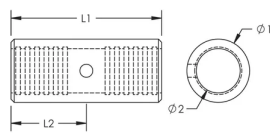
**Designed to Meet:** AASHTO;ABNT NBR 8548:1984;ACI 318 Type 1 (125% Specified Yield);ACI 318 Type 2 (Specified Tensile);ACI 349;ACI 359;AS3600

## ADDITIONAL PRODUCT DETAILS

Prior to installation, please read and understand all of the detailed instructions and safety notices provided in the nVent LENTON Cadweld Rebar Splicing System Instruction Manual.

Sizes not shown may be available by special order. Contact your nVent LENTON representative for more information.

DIAGRAMS



WARNING

nVent products shall be installed and used only as indicated in nVent's product instruction sheets and training materials. Instruction sheets are available at [www.nvent.com](http://www.nvent.com) and from your nVent customer service representative. Improper installation, misuse, misapplication or other failure to completely follow nVent's instructions and warnings may cause product malfunction, property damage, serious bodily injury and death and/or void your warranty.

North America

+1.800.753.9221  
Option 1 – Customer Care  
Option 2 – Technical  
Support

Europe

Netherlands:  
+31 800-0200135  
France:  
+33 800 901 793

Europe

Germany:  
800 1890272  
Other Countries:  
+31 13 5835404

APAC

Shanghai:  
+ 86 21 2412 1618/19  
Sydney:  
+61 2 9751 8500



Our powerful portfolio of brands:

CADDY   ERICO   HOFFMAN   ILSCO   SCHROFF   TRACHTE