

T-Series Horizontal Splice Kit, Side Fill



T-Series splice kits contain the following: Sleeve, filler material kit (filler material, packing, pouring basin ceramic insert and disk, pouring basin ceramic guide tube), pouring basin and pouring basin crucible. Splice kits are ordered based on the quantity of splices needed. Sleeves and filler material kits are one-time use parts. Pouring basins and crucibles are prorated based on their anticipated life. Ordering splice kits simplifies ordering, reduces order errors and helps ensure proper sizing of components. Kits can be ordered with longer (extended) sleeves for use when the reinforcing steel deformation pattern or spacing does not meet the minimum product specifications.

FEATURES

Simplifies ordering

Used to splice the same diameter bars

SPECIFICATIONS

Sleeve: Standard Length

Table 1/2

| Catalog Number | Rebar Size, US | Rebar Size, Canada | Length 1 (L1) | Length 2 (L2) | Height 1 (H1) | Height 2 (H2) |
|----------------|----------------|--------------------|---------------|---------------|---------------|---------------|
| RBT1091HS | #10 | | 3.45" | 16.03" | 19 3/4" | 2.97" |
| RBT11101HS | #11 | 35M | 3.7" | 16 1/4" | 19 3/4" | 2.97" |
| RBT1891HS | #18 | 55M | 4.01" | 16.67" | 21" | 2.97" |
| RBT6101HS | #6 | 20M | 3.32" | 15.62" | 18 1/4" | 2.97" |
| RBT8101HS | #8 | 25M | 3.32" | 15.87" | 18 1/4" | 2.97" |
| RBT9101HS | #9 | 30M | 3.45" | 16.01" | 18 1/4" | 2.97" |

Table 2/2

| Catalog Number | Diameter (Ø) |
|----------------|--------------|
| RBT1091HS | 5" |
| RBT11101HS | 5" |
| RBT1891HS | 7" |
| RBT6101HS | 4" |
| RBT8101HS | 4" |
| RBT9101HS | 4" |

ADDITIONAL PRODUCT DETAILS

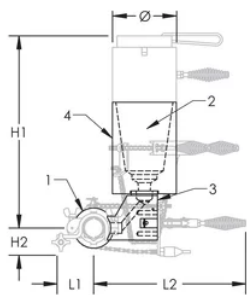
Prior to installation, please read and understand all of the detailed instructions and safety notices provided in the nVent LENTON Cadweld Rebar Splicing System instruction manual.

All dimensions are for reference only.

Components can also be purchased separately: (1) Sleeve, (2) Filler Material Kit (filler material, packing, pouring basin ceramic insert and disk, pouring basin ceramic guide tube), (3) Pouring Basin, and (4) Pouring Basin Crucible.

| Splice Kit Components | | | | | | | |
|-----------------------|-----------------|----------------------|---------------------------------------|----------------------------------|-------------|---------------|------------------------|
| Splice Kit | Filler Material | Packing (2 Required) | Pouring Basin Ceramic Insert and Disk | Pouring Basin Ceramic Guide Tube | Sleeve | Pouring Basin | Pouring Basin Crucible |
| RBT6101HS | RBF50 | RBS35477 | RBS5037 | RBS5038 | RBT6101HSA | RBWS1547X | RBWS22774 |
| RBT8101HS | RBF55 | RBS354710 | RBS5037 | RBS5038 | RBT8101HSA | RBWS1547C | RBWS22774 |
| RBT9101HS | RBF80 | RBS354711 | RBS5037 | RBS5038 | RBT9101HSA | RBWS1547D | RBWS22774 |
| RBT1091HS | RBF90 | RBS354712 | RBS5037 | RBS5038 | RBT1091HSA | RBWS1547E | RBWS22775 |
| RBT11101HS | RBF105 | RBS354712 | RBS5037 | RBS5038 | RBT11101HSA | RBWS1547F | RBWS22775 |
| RBT1891HS | RBF270 | RBS354720 | RBS5037 | RBS5039 | RBT1891HSA | RBWS1547M | RBWS22777 |

DIAGRAMS



WARNING

nVent products shall be installed and used only as indicated in nVent's product instruction sheets and training materials. Instruction sheets are available at www.nvent.com and from your nVent customer service representative. Improper installation, misuse, misapplication or other failure to completely follow nVent's instructions and warnings may cause product malfunction, property damage, serious bodily injury and death and/or void your warranty.

North America

+1.800.753.9221
Option 1 – Customer Care
Option 2 – Technical
Support

Europe

Netherlands:
+31 800-0200135
France:
+33 800 901 793

Europe

Germany:
800 1890272
Other Countries:
+31 13 5835404

APAC

Shanghai:
+ 86 21 2412 1618/19
Sydney:
+61 2 9751 8500



Our powerful portfolio of brands:

CADDY ERICO HOFFMAN ILSCO SCHROFF TRACHTE