

T-Series Horizontal Sleeve, Top Fill



The top fill horizontal T-Series sleeve has vent holes to reduce air entrapment and help ensure proper filling of the sleeve.

FEATURES

Designed to connect horizontal reinforcing bars and angular reinforcing bars up to 45 degrees

Used to splice the same diameter bars

Works with saw cut, flame cut and sheared bars

Can be visually inspected after installation

Available with extended sleeve lengths

SPECIFICATIONS

Finish: Plain

Material: Steel

100% U.S. Domestic Content: Yes

Table 1/2

Catalog Number	Sleeve	Rebar Size, US	Rebar Size, Canada	Diameter 1 (Ø1)	Diameter 2 (Ø2)	Length 1 (L1)
RBT6101HA	Standard Length	#6	20M	1 1/2"	1"	5"
RBT51012HA	Extended Length	#5	15M	1.38"	0.88"	6"
RBT7101HA	Standard Length	#7		1.63"	1.13"	5"
RBT1091HA	Standard Length	#10		2 1/4"	1.63"	5 1/2"

CatalogNumber	Sleeve	Rebar Size, US	Rebar Size, Canada	Diameter 1(Ø1)	Diameter 2(Ø2)	Length 1 (L1)
RBT11101HA	Standard Length	#11	35M	2 1/2"	1 3/4"	6"
RBT61012HA	Extended Length	#6	20M	1 1/2"	1"	7"
RBT81011HA	Extended Length	#8	25M	1.88"	1 1/4"	6"
RBT81012HA	Extended Length	#8	25M	1.88"	1 1/4"	8"
RBT8101HA	Standard Length	#8	25M	1.88"	1 1/4"	5"
RBT91012HA	Extended Length	#9	30M	2.13"	1 1/2"	7"
RBT9101HA	Standard Length	#9	30M	2.13"	1 1/2"	5"
RBT71011HA	Extended Length	#7		1.63"	1.13"	6"
RBT10911HA	Extended Length	#10		2 1/4"	1.63"	6 1/2"
RBT111011HA	Extended Length	#11	35M	2 1/2"	1 3/4"	7"
RBT111012HA	Extended Length	#11	35M	2 1/2"	1 3/4"	8"
RBT121018HA	Extended Length	#12		2 3/4"	1.88"	8"
RBT12917HA	Standard Length	#12		2 3/4"	1.88"	7"
RBT141011HA	Extended Length	#14	45M	3"	2.13"	8"
RBT14101HA	Standard Length	#14	45M	3"	2.13"	7"
RBT1891HA	Standard Length	#18	55M	3 3/4"	2.63"	9"
RBT91011HA	Extended Length	#9	30M	2.13"	1 1/2"	6"

Table 2/2

Catalog Number	Length 2 (L2)	Length 3 (L3)	Unit Weight
----------------	---------------	---------------	-------------

RBT6101HA	2 1/2"	0.78"	1.4 lb
RBT51012HA	3"		1.5 lb
RBT7101HA	2 1/2"	0.78"	1.5 lb
RBT1091HA	2 3/4"	0.78"	3 lb
RBT11101HA	3"	0.78"	4.3 lb
RBT61012HA	3 1/2"	0.78"	2 lb
RBT81011HA	3"	0.78"	3 lb
RBT81012HA	3 1/2"	0.78"	3 lb
RBT8101HA	2 1/2"	0.78"	2.22 lb
RBT91012HA	3 1/2"	0.78"	3.5 lb
RBT9101HA	2 1/2"	0.78"	2.5 lb
RBT71011HA	3"	1.03"	1.8 lb
RBT10911HA	3 1/4"	1.03"	3.5 lb
RBT111011HA	3 1/2"	1.03"	5 lb
RBT111012HA	4"	1.03"	5.7 lb
RBT121018HA	4"	1.03"	7.2 lb
RBT12917HA	3 1/2"	1.03"	6.3 lb
RBT141011HA	4"	1.03"	8 lb
RBT14101HA	3 1/2"	1.03"	7 lb

RBT1891HA	4 1/2"	1.03"	14.4 lb
RBT91011HA	3"	1.03"	3 lb

Designed to Meet: AASHTO;ABNT NBR 8548:1984;ACI 318 Type 1 (125% Specified Yield);ACI 318 Type 2 (Specified Tensile);ACI 349;ACI 359;AS3600

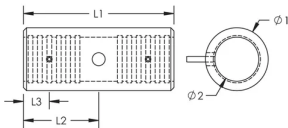
ADDITIONAL PRODUCT DETAILS

Prior to installation, please read and understand all of the detailed instructions and safety notices provided in the nVent LENTON Cadweld Rebar Splicing System Instruction Manual.

Sizes not shown may be available by special order. Contact your nVent LENTON representative for more information.

RBT51012HA does not have vent holes.

DIAGRAMS



WARNING

nVent products shall be installed and used only as indicated in nVent's product instruction sheets and training materials. Instruction sheets are available at www.nvent.com and from your nVent customer service representative. Improper installation, misuse, misapplication or other failure to completely follow nVent's instructions and warnings may cause product malfunction, property damage, serious bodily injury and death and/or void your warranty.

North America

+1.800.753.9221
Option 1 – Customer Care
Option 2 – Technical
Support

Europe

Netherlands:
+31 800-0200135
France:
+33 800 901 793

Europe

Germany:
800 1890272
Other Countries:
+31 13 5835404

APAC

Shanghai:
+ 86 21 2412 1618/19
Sydney:
+61 2 9751 8500



Our powerful portfolio of brands:

CADDY ERICO HOFFMAN ILSCO SCHROFF TRACHTE