

T-Series Horizontal Low Slip Sleeve, Top Fill



The top fill, low slip horizontal T-Series sleeve length is increased to reduce slip (for extreme code requirements) and when the rib pattern or spacing does not meet the minimum product specifications.

Vent holes are added to horizontal sleeves to reduce air entrapment and help ensure proper filling of the sleeve.

FEATURES

Designed to connect horizontal reinforcing bars and angular reinforcing bars up to 45 degrees

Used to splice the same diameter bars

Additional length improves performance

Works with saw cut, flame cut and sheared bars

Can be visually inspected after installation

SPECIFICATIONS

Finish: Plain

Material: Steel

100% U.S. Domestic Content: Yes

Table 1/2

Catalog Number	Rebar Size, US	Rebar Size, Canada	Diameter 1 (Ø1)	Diameter 2 (Ø2)	Length 1 (L1)	Length 2 (L2)
RBW6555HA	#5	15M	1.38"	0.88"	6"	3"
RBW6556HA	#6	20M	1 1/2"	1"	7"	3 1/2"
RBW6557HA	#7		1.62"	1.13"	7"	3 1/2"
RBW6558HA	#8	25M	1.88"	1 1/4"	7"	3 1/2"

CatalogNumber	Rebar Size, US	Rebar Size, Canada	Diameter 1(Ø1)	Diameter 2(Ø2)	Length 1 (L1)	Length 2 (L2)
RBW6559HA	#9	30M	2.13"	1 1/2"	7"	3 1/2"
RBW65510HA	#10		2 1/4"	1.63"	7 1/2"	3 3/4"
RBW65511HA	#11	35M	2 1/2"	1 3/4"	8"	4"
RBW65514HA	#14	45M	3"	2.13"	9"	4 1/2"
RBW65518HA	#18	55M	3 3/4"	2.63"	11"	5 1/2"

Table 2/2

Catalog Number	Length 3 (L3)	Unit Weight
RBW6555HA	0.78"	1.5 lb
RBW6556HA	0.78"	1.9 lb
RBW6557HA	0.78"	2.1 lb
RBW6558HA	0.78"	3 lb
RBW6559HA	0.78"	3.5 lb
RBW65510HA	1.03"	4 lb
RBW65511HA	1.03"	5.6 lb
RBW65514HA	1.03"	8.9 lb
RBW65518HA	1.03"	17.5 lb

Designed to Meet:

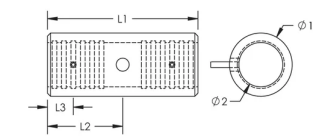
AASHTO;ABNT NBR 8548:1984;ACI 318 Type 1 (125% Specified Yield);ACI 318 Type 2 (Specified Tensile);ACI 349;ACI 359;AS3600

ADDITIONAL PRODUCT DETAILS

Prior to installation, please read and understand all of the detailed instructions and safety notices provided in the nVent LENTON Cadweld Rebar Splicing System Instruction Manual.

Sizes not shown may be available by special order. Contact your nVent LENTON representative for more information.

DIAGRAMS



WARNING

nVent products shall be installed and used only as indicated in nVent's product instruction sheets and training materials. Instruction sheets are available at www.nvent.com and from your nVent customer service representative. Improper installation, misuse, misapplication or other failure to completely follow nVent's instructions and warnings may cause product malfunction, property damage, serious bodily injury and death and/or void your warranty.

North America

+1.800.753.9221
Option 1 – Customer Care
Option 2 – Technical
Support

Europe

Netherlands:
+31 800-0200135
France:
+33 800 901 793

Europe

Germany:
800 1890272
Other Countries:
+31 13 5835404

APAC

Shanghai:
+ 86 21 2412 1618/19
Sydney:
+61 2 9751 8500



Our powerful portfolio of brands:

CADDY ERICO HOFFMAN ILSCO SCHROFF TRACHTE