

T-Series Horizontal Installation Equipment



T-Series horizontal installation equipment kits contain the following: Pouring basin frame, crucible frame set (crucible chain assembly, crucible extension, crucible cover), two end alignment fittings and a horizontal packing clamp. Installation equipment kits contain components that are long lasting and often interchangeable with other sizes. Ordering installation equipment kits simplifies ordering, reduces order errors and helps ensure proper sizing of components.

FEATURES

Simplifies ordering

Used to splice the same diameter bars

All components are designed for an extended life

SPECIFICATIONS

Material: Steel;Graphite

Catalog Number
RBW73914H
RBW73918H
RBW7395H
RBW7396H
RBW7397H
RBW7398H
RBW7399H

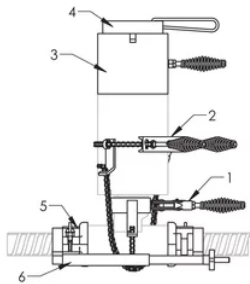
Catalog Number
RBW73910H
RBW73911H

ADDITIONAL PRODUCT DETAILS

Prior to installation, please read and understand all of the detailed instructions and safety notices provided in the nVent LENTON Cadweld Rebar Splicing System instruction manual.

Components can also be purchased separately: (1) Pouring Basin Frame, (2) Crucible Chain Assembly, (3) Crucible Extension, (4) Crucible Cover, (5) End Alignment Fitting, and (6) Horizontal Packing Clamp.

DIAGRAMS



WARNING

nVent products shall be installed and used only as indicated in nVent's product instruction sheets and training materials. Instruction sheets are available at www.nvent.com and from your nVent customer service representative. Improper installation, misuse, misapplication or other failure to completely follow nVent's instructions and warnings may cause product malfunction, property damage, serious bodily injury and death and/or void your warranty.

North America

+1.800.753.9221
Option 1 – Customer Care
Option 2 – Technical
Support

Europe

Netherlands:
+31 800-0200135
France:
+33 800 901 793

Europe

Germany:
800 1890272
Other Countries:
+31 13 5835404

APAC

Shanghai:
+ 86 21 2412 1618/19
Sydney:
+61 2 9751 8500



Our powerful portfolio of brands:

CADDY ERICO HOFFMAN ILSCO SCHROFF TRACHTE