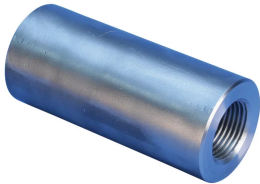


S5 Imperial UN Parallel Bolt Coupler, Plain



FEATURES

Provides continuity between reinforcing bar and imperial UN all-thread rod or bolts

May be used to anchor load-bearing equipment to foundations, columns or walls

Machined from non-weldable grades of material, but can be tack welded

SPECIFICATIONS

Finish: Plain

Material: Steel

100% U.S. Domestic Content: Yes

Table 1/2

Catalog Number	Rebar Size, US	Rebar Size, Canada	Diameter (Ø)	Length (L)	A	Bar Depth (BD)
EL25S5	#8	25M	1.75"	3.95"	2.25"	1.36"
EL28S5	#9	30M	1.88"	4.27"	2.44"	1.49"
EL32S5B	#10		1.88"	4.55"	2.63"	1.58"
EL36S5	#11	35M	2.5"	5.14"	3.13"	1.68"
EL32S5A	#10		2"	4.55"	2.63"	1.58"

CatalogNumber	Rebar Size, US	Rebar Size, Canada	Diameter (Ø)	Length (L)	A	Bar Depth (BD)
EL36S5A	#11	35M	2"	5.14"	3.13"	1.68"
EL57TS5	#18	55M	4"	7.63"	4.38"	2.81"
EL57TS5A	#18	55M	3.5"	7.63"	4.38"	2.81"
EL43TS5	#14	45M	3"	6.14"	3.5"	2.2"

Table 2/2

Catalog Number	Thread Size (TS)	Thread Depth (TD)	Unit Weight
EL25S5	1 1/8" UN	1.5"	1.8 lb
EL28S5	1 1/4" UN	1.69"	2.2 lb
EL32S5B	1 1/4" UN	1.88"	4.5 lb
EL36S5	1 3/4" UN	2.13"	4.5 lb
EL32S5A	1 3/8" UN	1.88"	2.5 lb
EL36S5A	1 3/8" UN	2.13"	2.7 lb
EL57TS5	2 1/2" UN	3.38"	18 lb
EL57TS5A	2 1/4" UN	3.38"	14.1 lb
EL43TS5	2" UN	2.5"	8.2 lb

Designed to Meet: AASHTO;ABNT NBR 8548:1984;ACI 318 Type 1 (125% Specified Yield);ACI 318 Type 2 (Specified Tensile);ACI 349;ACI 359;AS3600

ADDITIONAL PRODUCT DETAILS

Bar dimensions and weights listed may vary by region. Coupler sizes not shown may be available by special order. Contact your nVent LENTON representative for more information.

Coupler supplied without bolt.

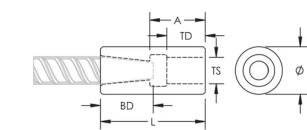
Bolt may be replaced by threaded rod of same class/grade.

All calculations based on a minimum bolt engagement equal to Thread Depth (TD).

System Capacity based on bolt to coupler connection. For rebar to coupler connection, refer to applicable building codes and approvals or contact your nVent LENTON representative.

Bolt-to-Coupler Capacity			
Part Number	Grade 2	Grade 5	Grade 8
EL25S5	47,427 lbs	94,855 lbs	118,568 lbs
EL28S5	59,982 lbs	119,965 lbs	143,220 lbs
EL32S5A	89,511 lbs	179,021 lbs	206,473 lbs
EL32S5B	59,982 lbs	119,965 lbs	143,220 lbs
EL36S5	124,929 lbs	232,146 lbs	232,146 lbs
EL36S5A	74,010 lbs	148,020 lbs	149,029 lbs
EL43TS5	166,239 lbs	332,477 lbs	371,623 lbs
EL57TS5	266,528 lbs	533,057 lbs	586,526 lbs
EL57TS5A	213,438 lbs	426,876 lbs	453,009 lbs

DIAGRAMS



WARNING

nVent products shall be installed and used only as indicated in nVent's product instruction sheets and training materials. Instruction sheets are available at www.nvent.com and from your nVent customer service representative. Improper installation, misuse, misapplication or other failure to completely follow nVent's instructions and warnings may cause product malfunction, property damage, serious bodily injury and death and/or void your warranty.

North America

+1.800.753.9221

Option 1 – Customer Care

Option 2 – Technical

Support

Europe

Netherlands:

+31 800-0200135

France:

+33 800 901 793

Europe

Germany:

800 1890272

Other Countries:

+31 13 5835404

APAC

Shanghai:

+ 86 21 2412 1618/19

Sydney:

+61 2 9751 8500



Our powerful portfolio of brands:

CADDY

ERICO

HOFFMAN

ILSCO

SCHROFF

TRACHTE