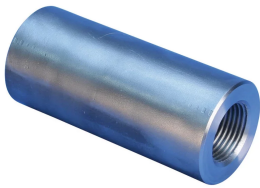


S5 Imperial UN Parallel Bolt Coupler for Nuclear Applications



The nVent LENTON S5 Imperial UN Parallel Bolt Coupler for Nuclear Applications provides a full-strength joint between a reinforcing steel bar and a standard bolt or all-thread bar. The nuclear construction industry demands scrutiny throughout the entire product life-cycle and nVent LENTON is here to be your technical expert. All weldable couplers are assigned unique part numbers to ensure detailed product documentation—including full product traceability—is performed to individual customer requirements.

When it comes to nuclear construction, precision, reliability, and compliance are non-negotiable. That's why leading contractors and engineers around the world turn to nVent LENTON—a global leader in mechanical rebar splicing systems engineered for the most demanding environments.

FEATURES

Provides continuity between reinforcing bar and imperial UN all-thread rod or bolts

May be used to anchor load-bearing equipment to foundations, columns or walls

Machined from non-weldable grades of material, but can be tack-welded

Digital model available in nVent BIM Library

SPECIFICATIONS

Finish: Plain

Material: Steel

100% U.S. Domestic Content: Yes

Table 1/2

Catalog Number	Rebar Size, US	Diameter (Ø)	Length (L)	A	Bar Depth (BD)	Thread Size (TS)
EL32S5BQ	#10	1.88"	4.55"	2.63"	1.58"	1 1/4" UN
EL32S5AQ	#10	2"	4.55"	2.63"	1.58"	1 3/8" UN

Table 2/2

Catalog Number	Thread Depth (TD)	Unit Weight
EL32S5BQ	1.88"	4.5 lb
EL32S5AQ	1.88"	2.5 lb

Designed to Meet: AASHTO;ABNT NBR 8548:1984;ACI 318 Type 1 (125% Specified Yield);ACI 318 Type 2 (Specified Tensile);ACI 349;ACI 359;AS3600

ADDITIONAL PRODUCT DETAILS

Bar dimensions and weights listed may vary by region. Coupler sizes not shown may be available by special order. Contact your nVent LENTON representative for more information.

Coupler supplied without bolt.

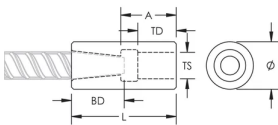
Bolt may be replaced by threaded rod of same class/grade.

All calculations based on a minimum bolt engagement equal to Thread Depth (TD).

System Capacity based on bolt to coupler connection. For rebar to coupler connection, refer to applicable building codes and approvals or contact your nVent LENTON representative.

Bolt-to-Coupler Capacity			
Part Number	Grade 2	Grade 5	Grade 8
EL32S5AQ	89,511 lbs	179,021 lbs	206,473 lbs
EL32S5BQ	59,982 lbs	119,965 lbs	143,220 lbs

DIAGRAMS



WARNING

nVent products shall be installed and used only as indicated in nVent's product instruction sheets and training materials. Instruction sheets are available at www.nvent.com and from your nVent customer service representative. Improper installation, misuse, misapplication or other failure to completely follow nVent's instructions and warnings may cause product malfunction, property damage, serious bodily injury and death and/or void your warranty.

North America

+1.800.753.9221

Option 1 – Customer Care

Option 2 – Technical

Support

Europe

Netherlands:

+31 800-0200135

France:

+33 800 901 793

Europe

Germany:

800 1890272

Other Countries:

+31 13 5835404

APAC

Shanghai:

+ 86 21 2412 1618/19

Sydney:

+61 2 9751 8500



Our powerful portfolio of brands:

CADDY

ERICO

HOFFMAN

ILSCO

SCHROFF

TRACHTE