

# S4 Imperial UNC Parallel Bolt Coupler, Plain



## FEATURES

Provides continuity between reinforcing bar and imperial UNC all-thread rod or bolts

May be used to anchor load-bearing equipment to foundations, columns or walls

Machined from non-weldable grades of material, but can be tack welded

## SPECIFICATIONS

**Finish:** Plain

**Material:** Steel

**100% U.S. Domestic Content:** Yes

Table 1/2

Catalog Number	Rebar Size, US	Rebar Size, Canada	Hex Width (W)	Diameter (Ø)	Length (L)	A
EL10S4	#3		0.88"		2.03"	1.06"
EL12S4	#4	10M	1.06"		2.09"	1.25"
EL16S4	#5	15M	1.19"		2.56"	1.44"
EL20S4	#6	20M		1.38"	3.06"	1.63"
EL22S4	#7			1.75"	3.42"	1.81"

CatalogNumber	Rebar Size, US	Rebar Size, Canada	Hex Width (W)	Diameter (Ø)	Length (L)	A
EL25S4	#8	25M		1.75"	3.95"	2.25"
EL28S4	#9	30M		1.88"	4.27"	2.44"
EL32S4	#10			2.25"	4.55"	2.63"
EL36S4B	#11	35M		2.25"	4.75"	2.63"
EL36S4A	#11	35M		2.25"	5.63"	3.5"
EL36S4	#11	35M		2.5"	5.14"	3.13"
EL57TS4	#18	55M		4"	7.63"	4.38"
EL43TS4	#14	45M		3"	6.14"	3.5"

Table 2/2				
Catalog Number	Bar Depth (BD)	Thread Size (TS)	Thread Depth (TD)	Unit Weight
EL10S4	0.69"	1/2" UNC	0.56"	0.3 lb
EL12S4	0.58"	5/8" UNC	0.75"	0.5 lb
EL16S4	0.86"	3/4" UNC	0.94"	0.6 lb
EL20S4	1.09"	7/8" UNC	1.13"	0.9 lb
EL22S4	1.26"	1" UNC	1.31"	1.8 lb
EL25S4	1.36"	1 1/8" UNC	1.5"	1.8 lb
EL28S4	1.49"	1 1/4" UNC	1.69"	2.2 lb
EL32S4	1.58"	1 1/2" UNC	1.88"	3.4 lb
EL36S4B	1.68"	1 1/2" UNC	1.88"	3.4 lb

Catalog Number	Bar Depth (BD)	Thread Size (TS)	Thread Depth (TD)	Unit Weight
EL36S4A	1.68"	1 1/4" UNC	2.5"	4.5 lb
EL36S4	1.68"	1 3/4" UNC	2.13"	4.5 lb
EL57TS4	2.81"	2 1/2" UNC	3.38"	18.5 lb
EL43TS4	2.2"	2" UNC	2.5"	8.2 lb

**Designed to Meet:** AASHTO;ABNT NBR 8548:1984;ACI 318 Type 1 (125% Specified Yield);ACI 318 Type 2 (Specified Tensile);ACI 349;ACI 359;AS3600

## ADDITIONAL PRODUCT DETAILS

Bar dimensions and weights listed may vary by region. Coupler sizes not shown may be available by special order. Contact your nVent LENTON representative for more information.

Coupler supplied without bolt.

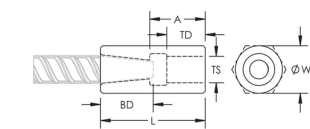
Bolt may be replaced by threaded rod of same class/grade.

All calculations based on a minimum bolt engagement equal to Thread Depth (TD).

System Capacity based on bolt to coupler connection. For rebar to coupler connection, refer to applicable building codes and approvals or contact your nVent LENTON representative.

Bolt-to-Coupler Capacity			
Part Number	Grade 2	Grade 5	Grade 8
EL10S4	8,514 lbs	17,028 lbs	21,285 lbs
EL12S4	13,560 lbs	27,120 lbs	33,900 lbs
EL16S4	20,068 lbs	40,135 lbs	48,663 lbs
EL20S4	27,704 lbs	55,408 lbs	69,260 lbs
EL22S4	36,345 lbs	72,689 lbs	90,862 lbs
EL25S4	45,797 lbs	91,593 lbs	114,491 lbs
EL28S4	58,147 lbs	116,293 lbs	143,220 lbs
EL32S4	84,315 lbs	168,630 lbs	206,473 lbs
EL36S4	113,968 lbs	227,935 lbs	232,146 lbs
EL36S4A	58,147 lbs	116,293 lbs	145,367 lbs
EL36S4B	84,315 lbs	168,630 lbs	206,473 lbs
EL43TS4	149,894 lbs	299,787 lbs	371,623 lbs
EL57TS4	239,930 lbs	479,859 lbs	599,824 lbs

DIAGRAMS



WARNING

nVent products shall be installed and used only as indicated in nVent's product instruction sheets and training materials. Instruction sheets are available at [www.nvent.com](http://www.nvent.com) and from your nVent customer service representative. Improper installation, misuse, misapplication or other failure to completely follow nVent's instructions and warnings may cause product malfunction, property damage, serious bodily injury and death and/or void your warranty.

North America

+1.800.753.9221  
Option 1 – Customer Care  
Option 2 – Technical  
Support

Europe

Netherlands:  
+31 800-0200135  
France:  
+33 800 901 793

Europe

Germany:  
800 1890272  
Other Countries:  
+31 13 5835404

APAC

Shanghai:  
+ 86 21 2412 1618/19  
Sydney:  
+61 2 9751 8500



Our powerful portfolio of brands:

CADDY   ERICO   HOFFMAN   ILSCO   SCHROFF   TRACHTE