

S13 Metric Parallel Bolt Coupler, Plain, Worldwide Design



FEATURES

Provides continuity between reinforcing bar and ISO® 965 metric all-thread rod or bolts

May be used to anchor load-bearing equipment to foundations, columns or walls

Machined from non-weldable grades of material, but can be tack welded

SPECIFICATIONS

Finish:	Plain
Material:	Steel
Design Version:	Worldwide (Globally Available Materials)
100% U.S. Domestic Content:	Yes

Table 1/2

Catalog Number	Rebar Size, US	Rebar Size, Canada	Diameter (Ø)	Length (L)	A	Bar Depth (BD)
EL22S13	#7		1.75"	4.1"	2.28"	1.46"
EL28S13	#9	30M	1.88"	4.53"	2.53"	1.65"
EL25S13	#8	25M	1.75"	4.31"	2.4"	1.57"
EL32S13	#10		2.25"	4.9"	2.77"	1.77"

Table 2/2

Catalog Number	Thread Size (TS)	Thread Depth (TD)	Unit Weight
EL22S13	M27	1.2"	1.5 lb
EL28S13	M33	1.45"	2.6 lb
EL25S13	M30	1.32"	2.9 lb
EL32S13	M39	1.69"	3.1 lb

Designed to Meet: AASHTO;ABNT NBR 8548:1984;ACI 318 Type 1 (125% Specified Yield);ACI 318 Type 2 (Specified Tensile);ACI 349;ACI 359;AS3600

ADDITIONAL PRODUCT DETAILS

Bar dimensions and weights listed may vary by region. Coupler sizes not shown may be available by special order. Contact your nVent LENTON representative for more information.

Coupler supplied without bolt.

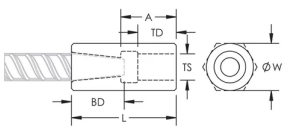
Bolt may be replaced by threaded rod of same class/grade.

All calculations based on a minimum bolt engagement equal to Thread Depth (TD).

System Capacity based on bolt to coupler connection. For rebar to coupler connection, refer to applicable building codes and approvals or contact your nVent LENTON representative.

Bolt-to-Coupler Capacity (lb f)					
Part Number	Grade 4.8	Grade 5.8	Grade 8.8	Grade 10.9	Grade 12.9
EL22S13	41,311	51,639	82,623	101,132	101,132
EL25S13	50,410	63,013	100,820	126,013	126,013
EL28S13	62,367	77,959	124,734	139,644	139,644
EL32S13	87,743	109,679	175,486	176,215	176,215

DIAGRAMS



WARNING

nVent products shall be installed and used only as indicated in nVent's product instruction sheets and training materials. Instruction sheets are available at www.nvent.com and from your nVent customer service representative. Improper installation, misuse, misapplication or other failure to completely follow nVent's instructions and warnings may cause product malfunction, property damage, serious bodily injury and death and/or void your warranty.

North America

+1.800.753.9221

Option 1 – Customer Care

Option 2 – Technical

Support

Europe

Netherlands:

+31 800-0200135

France:

+33 800 901 793

Europe

Germany:

800 1890272

Other Countries:

+31 13 5835404

APAC

Shanghai:

+ 86 21 2412 1618/19

Sydney:

+61 2 9751 8500



Our powerful portfolio of brands:

CADDY

ERICO

HOFFMAN

ILSCO

SCHROFF

TRACHTE