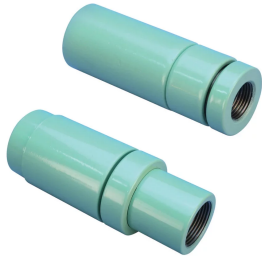


# P9 Position Transition Coupler, Coated



Coated reinforcing bar is used in place of plain reinforcing bars to protect against corrosion. Typical applications include bridges, parking structures, pavement, marine structures and repair work. nVent LENTON couplers and mechanical anchors are available in multiple coatings to meet specific job requirements.

## FEATURES

Used to splice different diameter bars

Designed to splice two curved, bent or straight bars, when neither bar can be rotated and where the ongoing bar is free to move in its axial direction

## SPECIFICATIONS

<b>Finish Standard:</b>	ASTM® A775/A775M and AASHTO M284
<b>Finish:</b>	Epoxy Coated
<b>Material:</b>	Steel
<b>100% U.S. Domestic Content:</b>	Yes

Table 1/2

Catalog Number	Rebar Size, US	Rebar Size, Canada	Diameter (Ø)	Length 1 (L1)	Length 2 (L2)	Bar Depth 1 (BD1)
EL2825P9ES	#9, #8	30M, 25M	2.5"	5.06"	5.68"	1.49"
EL3225P9ES	#10, #8		2.5"	5.31"	5.93"	1.58"
EL3228P9ES	#10, #9		2.5"	5.31"	5.93"	1.58"
EL3628P9ES	#11, #9	35M, 30M	2.5"	5.72"	6.31"	1.68"
EL3632P9ES	#11, #10		2.5"	5.72"	6.31"	1.68"

CatalogNumber	Rebar Size, US	Rebar Size, Canada	Diameter (Ø)	Length 1 (L1)	Length 2 (L2)	Bar Depth 1 (BD1)
EL43T36P9ES	#14, #11	45M, 35M	3"	8.81"	9.63"	2.2"
EL57T43TP9ES	#18, #14	55M, 45M	4"	10.06"	11.03"	2.81"

Table 2/2

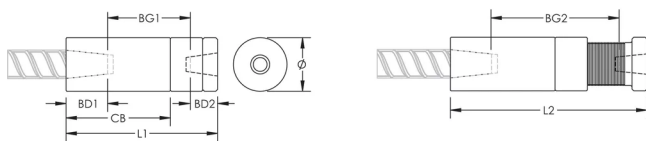
Catalog Number	Bar Depth 2 (BD2)	Bar Gap 1 (BG1)	Bar Gap 2 (BG2)	Coupler Body (CB)	Unit Weight
EL2825P9ES	1.36"	2.21"	2.83"	3.56"	6.1 lb
EL3225P9ES	1.36"	2.37"	2.99"	3.81"	6.3 lb
EL3228P9ES	1.49"	2.24"	2.86"	3.81"	6.2 lb
EL3628P9ES	1.49"	2.55"	3.14"	4.19"	6.6 lb
EL3632P9ES	1.58"	2.46"	3.05"	4.19"	6.4 lb
EL43T36P9ES	1.68"	4.93"	5.75"	5"	13 lb
EL57T43TP9ES	2.2"	5.05"	6.02"	6"	26.4 lb

**Designed to Meet:** AASHTO;ABNT NBR 8548:1984;ACI 318 Type 1 (125% Specified Yield);ACI 318 Type 2 (Specified Tensile);ACI 349;ACI 359;AS3600

## ADDITIONAL PRODUCT DETAILS

Bar dimensions and weights listed may vary by region. Coupler sizes not shown may be available by special order. Contact your nVent LENTON representative for more information.

## DIAGRAMS



**WARNING**

nVent products shall be installed and used only as indicated in nVent's product instruction sheets and training materials. Instruction sheets are available at [www.nvent.com](http://www.nvent.com) and from your nVent customer service representative. Improper installation, misuse, misapplication or other failure to completely follow nVent's instructions and warnings may cause product malfunction, property damage, serious bodily injury and death and/or void your warranty.

**North America**

+1.800.753.9221  
Option 1 – Customer Care  
Option 2 – Technical  
Support

**Europe**

Netherlands:  
+31 800-0200135  
France:  
+33 800 901 793

**Europe**

Germany:  
800 1890272  
Other Countries:  
+31 13 5835404

**APAC**

Shanghai:  
+ 86 21 2412 1618/19  
Sydney:  
+61 2 9751 8500



Our powerful portfolio of brands:

**CADDY   ERICO   HOFFMAN   ILSCO   SCHROFF   TRACHTE**