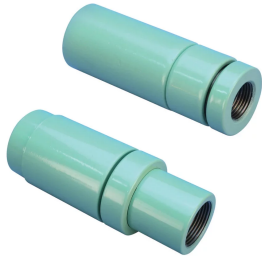


P9 Position Coupler, Coated



Coated reinforcing bar is used in place of plain reinforcing bars to protect against corrosion. Typical applications include bridges, parking structures, pavement, marine structures and repair work. nVent LENTON couplers and mechanical anchors are available in multiple coatings to meet specific job requirements.

FEATURES

Designed to splice the same diameter bars

Designed to splice two curved, bent or straight bars, when neither bar can be rotated and where the ongoing bar is free to move in its axial direction

SPECIFICATIONS

Material: Steel

100% U.S. Domestic Content: Yes

Table 1/2

Catalog Number	Finish	Finish Standard	Rebar Size, US	Rebar Size, Canada	Diameter (Ø)	Length 1 (L1)
EL20P9EG	Electrogalvanized	ASTM® B633 per SC 3	#6	20M	1.81"	4.28"
EL20P9ES	Epoxy Coated	ASTM® A775/A775M and AASHTO M284	#6	20M	1.81"	4.28"
EL22P9ES	Epoxy Coated	ASTM® A775/A775M and AASHTO M284	#7		1.81"	4.56"
EL25P9ES	Epoxy Coated	ASTM® A775/A775M and AASHTO M284	#8	25M	1.81"	4.91"

CatalogNumber	Finish	Finish Standard	Rebar Size, US	Rebar Size, Canada	Diameter (Ø)	Length 1 (L1)
EL28P9ES	Epoxy Coated	ASTM® A775/A775M and AASHTO M284	#9	30M	2.5"	5.06"
EL32P9EG	Electrogalvanized	ASTM® B633 per SC 3	#10		2.5"	5.31"
EL32P9ES	Epoxy Coated	ASTM® A775/A775M and AASHTO M284	#10		2.5"	5.31"
EL36P9EG	Electrogalvanized	ASTM® B633 per SC 3	#11	35M	2.5"	5.72"
EL36P9ES	Epoxy Coated	ASTM® A775/A775M and AASHTO M284	#11	35M	2.5"	5.72"
EL43TP9EG	Electrogalvanized	ASTM® B633 per SC 3	#14	45M	3"	8.81"
EL43TP9ES	Epoxy Coated	ASTM® A775/A775M and AASHTO M284	#14	45M	3"	8.81"
EL57TP9ES	Epoxy Coated	ASTM® A775/A775M and AASHTO M284	#18	55M	4"	10.5"

Table 2/2						
Catalog Number	Length 2 (L2)	Bar Depth (BD)	Bar Gap 1 (BG1)	Bar Gap 2 (BG2)	Coupler Body (CB)	Unit Weight
EL20P9EG	4.87"	1.09"	2.09"	2.68"	2.75"	2.7 lb
EL20P9ES	4.87"	1.09"	2.09"	2.68"	2.75"	2.7 lb
EL22P9ES	5.18"	1.26"	2.05"	2.68"	3.06"	2.8 lb
EL25P9ES	5.5"	1.36"	2.24"	2.83"	3.38"	2.8 lb
EL28P9ES	5.68"	1.49"	2.09"	2.68"	3.56"	6 lb

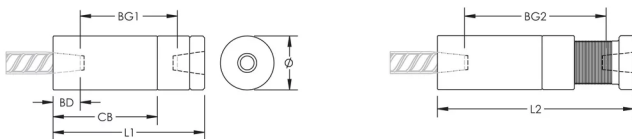
CatalogNumber	Length 2 (L2)	Bar Depth (BD)	Bar Gap 1(BG1)	Bar Gap 2(BG2)	Coupler Body (CB)	Unit Weight
EL32P9EG	5.93"	1.58"	2.17"	2.8"	3.81"	6.1 lb
EL32P9ES	5.93"	1.58"	2.17"	2.8"	3.81"	6.1 lb
EL36P9EG	6.31"	1.68"	2.32"	2.91"	4.19"	6.3 lb
EL36P9ES	6.31"	1.68"	2.32"	2.91"	4.19"	6.3 lb
EL43TP9EG	9.63"	2.2"	4.41"	5.24"	5"	12.4 lb
EL43TP9ES	9.63"	2.2"	4.41"	5.24"	5"	12.4 lb
EL57TP9ES	11.32"	2.81"	4.92"	5.75"	6.13"	24.8 lb

Designed to Meet: AASHTO;ABNT NBR 8548:1984;ACI 318 Type 1 (125% Specified Yield);ACI 318 Type 2 (Specified Tensile);ACI 349;ACI 359;AS3600

ADDITIONAL PRODUCT DETAILS

Bar dimensions and weights listed may vary by region. Coupler sizes not shown may be available by special order. Contact your nVent LENTON representative for more information.

DIAGRAMS



WARNING

nVent products shall be installed and used only as indicated in nVent's product instruction sheets and training materials. Instruction sheets are available at www.nvent.com and from your nVent customer service representative. Improper installation, misuse, misapplication or other failure to completely follow nVent's instructions and warnings may cause product malfunction, property damage, serious bodily injury and death and/or void your warranty.

North America

+1.800.753.9221

Option 1 – Customer Care

Option 2 – Technical

Support

Europe

Netherlands:

+31 800-0200135

France:

+33 800 901 793

Europe

Germany:

800 1890272

Other Countries:

+31 13 5835404

APAC

Shanghai:

+ 86 21 2412 1618/19

Sydney:

+61 2 9751 8500



Our powerful portfolio of brands:

CADDY

ERICO

HOFFMAN

ILSCO

SCHROFF

TRACHTE