

One-Piece Flange Coupler for Nuclear Applications



One-piece flange couplers are ideal for eliminating protruding dowel bars in segmental pour applications. The flange side of the coupler is typically tack or seal welded to cast-in-place structural steel walls commonly found in most modern nuclear reactor designs.

The nuclear industry demands scrutiny throughout the entire product life-cycle. nVent LENTON products produced under nVent's nuclear quality systems receive the utmost attention to detail and can meet the high demands of the nuclear industry. These quality systems are designed to include compliance to ASME® NCA-3800 (ERICO - QSC 595), NQA-1, 10CFR50 Appendix B, 10CFR 50.55(e), 10CFR Part 21 and USNRC Regulatory Guide 1.28. nVent LENTON products produced for nuclear applications are assigned unique part numbers to ensure detailed product documentation and full product traceability in accordance with demanding industry expectations.

FEATURES

Designed to splice the same diameter bars where the second bar can be rotated and is not restricted in its axial direction

Tack welding allows the coupler to be used for positioning of a bent bar on the first bar

Installs quickly and easily

SPECIFICATIONS

Finish: Plain

Material: Steel

100% U.S. Domestic Content: Yes

Table 1/2

Catalog Number	Rebar Size, US	Rebar Size, Canada	Diameter 1 (Ø1)	Diameter 2 (Ø2)	Length 1 (L1)	Length 2 (L2)
EL16SAQSP004	#5	15M	1.57"	1"	2.19"	1.56"
EL18SAQSP004			1.58"	1"	2.44"	1.81"

CatalogNumber	Rebar Size, US	Rebar Size, Canada	Diameter 1(Ø1)	Diameter 2(Ø2)	Length 1 (L1)	Length 2 (L2)
EL20SAQSP004	#6	20M	1.77"	1.13"	2.81"	2.18"
EL22SAQSP004	#7		1.77"	1 1/4"	3.16"	2.53"
EL25SAQSP004	#8	25M	1.97"	1.38"	3.34"	2.71"
EL28SAQSP004	#9	30M	1.97"	1 1/2"	3.59"	2.96"
EL36SAQSP004	#11	35M	2.36"	1.88"	3.97"	3.34"
EL32SAQSP004	#10		2.36"	1 3/4"	3.8"	3.15"
EL40SAQSP004			2.76"	2 1/4"	5"	4.37"

Table 2/2

Catalog Number	Bar Depth (BD)	Bar Gap (BG)	Unit Weight
EL16SAQSP004	0.86"	0.46"	0.5 lb
EL18SAQSP004	0.95"	0.53"	0.5 lb
EL20SAQSP004	1.09"	0.62"	0.7 lb
EL22SAQSP004	1.26"	0.63"	0.9 lb
EL25SAQSP004	1.36"	0.63"	1.1 lb
EL28SAQSP004	1.49"	0.62"	1.3 lb
EL36SAQSP004	1.38"	0.61"	2 lb
EL32SAQSP004	1.58"	0.62"	1.8 lb
EL40SAQSP004	2.17"	0.65"	3.7 lb

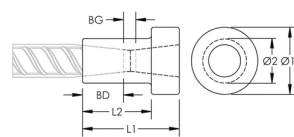
Designed to Meet:

AASHTO;ABNT NBR 8548:1984;ACI 318 Type 1 (125% Specified Yield);ACI 318 Type 2 (Specified Tensile);ACI 349;ACI 359;AS3600

ADDITIONAL PRODUCT DETAILS

Coupler sizes not shown may be available by special order. Contact your nVent LENTON representative for more information.

DIAGRAMS



WARNING

nVent products shall be installed and used only as indicated in nVent's product instruction sheets and training materials. Instruction sheets are available at www.nvent.com and from your nVent customer service representative. Improper installation, misuse, misapplication or other failure to completely follow nVent's instructions and warnings may cause product malfunction, property damage, serious bodily injury and death and/or void your warranty.

North America

+1.800.753.9221
Option 1 – Customer Care
Option 2 – Technical
Support

Europe

Netherlands:
+31 800-0200135
France:
+33 800 901 793

Europe

Germany:
800 1890272
Other Countries:
+31 13 5835404

APAC

Shanghai:
+ 86 21 2412 1618/19
Sydney:
+61 2 9751 8500



Our powerful portfolio of brands:

CADDY ERICO HOFFMAN ILSCO SCHROFF TRACHTE