

# nVent LENTON Interlok Transition Grout-Fill Coupler, Coated



Coated reinforcing bar is used in place of plain reinforcing bars to protect against corrosion. Typical applications include bridges, parking structures, pavement, marine structures and repair work. nVent LENTON couplers and mechanical anchors are available in multiple coatings to meet specific job requirements.

## FEATURES

Designed to splice different diameter bars

Over-sized cavity allows for greater field tolerance

Taper-threaded end helps prevent movement of the reinforcing bars and eliminate misalignment

Requires less grout than most competitive systems

## SPECIFICATIONS

**Finish Standard:** ASTM® A767 Class I

**Material:** Cast Iron

**Finish:** Hot-Dip Galvanized

Table 1/1

Catalog Number	Diameter 1 (Ø1)	Diameter 2 (Ø2)	Length 1 (L1)	Length 2 (L2)	Bar Depth (BD)	Unit Weight
LK86GV	2.69"	2"	8.62"	7"	1.09"	5 lb
LK87GV	2.69"	2"	8.62"	7"	1.26"	4.8 lb
LK97GV	2.81"	2.13"	9 3/4"	8"	1.26"	5.4 lb
LK98GV	2.81"	2.13"	9 3/4"	8"	1.36"	5.4 lb

CatalogNumber	Diameter 1(Ø1)	Diameter 2(Ø2)	Length 1 (L1)	Length 2 (L2)	Bar Depth (BD)	Unit Weight
LK109GV	3"	2.31"	10.81"	9"	1.49"	8 lb
LK1110GV	3.13"	2.44"	12"	9.88"	1.58"	8 lb
LK1410GV	3.69"	2 3/4"	15.19"	12 3/4"	1.58"	16 lb
LK1411GV	3.69"	2 3/4"	15.19"	12 3/4"	1.68"	15.7 lb
LK1814TGV	4 1/2"	3 1/4"	20.38"	17"	2.2"	44 lb

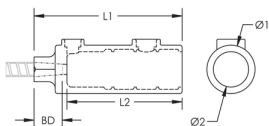
**Designed to Meet:** AASHTO;ABNT NBR 8548:1984;ACI 318 Type 1 (125% Specified Yield);ACI 318 Type 2 (Specified Tensile);ACI 349;ACI 359;AS3600

## ADDITIONAL PRODUCT DETAILS

Bar dimensions and weights listed may vary by region. Coupler sizes not shown may be available by special order. Contact your nVent LENTON representative for more information.

Prior to installation, please read and understand the detailed instructions and safety notices provided in the nVent LENTON Interlok Instruction Manual.

## DIAGRAMS



## WARNING

nVent products shall be installed and used only as indicated in nVent's product instruction sheets and training materials. Instruction sheets are available at [www.nvent.com](http://www.nvent.com) and from your nVent customer service representative. Improper installation, misuse, misapplication or other failure to completely follow nVent's instructions and warnings may cause product malfunction, property damage, serious bodily injury and death and/or void your warranty.

#### North America

+1.800.753.9221

Option 1 – Customer Care

Option 2 – Technical

Support

#### Europe

Netherlands:

+31 800-0200135

France:

+33 800 901 793

#### Europe

Germany:

800 1890272

Other Countries:

+31 13 5835404

#### APAC

Shanghai:

+ 86 21 2412 1618/19

Sydney:

+61 2 9751 8500



Our powerful portfolio of brands:

**CADDY**

**ERICO**

**HOFFMAN**

**ILSCO**

**SCHROFF**

**TRACHTE**