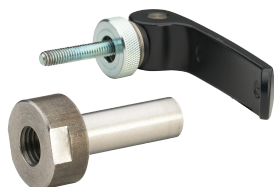


nVent LENTON Interlok Toggle Form Mount



The nVent LENTON Interlok Toggle Form Mount is a quick and easy way to secure Interlok Grout-Fill Coupler variants for pre-cast and cast-in-place construction. Designed to be used with the nVent LENTON Interlok Grommet, the Interlok Toggle Form Mount provides maximum flexibility and can be consistently reused with minimal wear and tear. Featuring a tool-free operation, installers can save time in forms while holding Interlok Grout-Fill Couplers in place.

FEATURES

Durable and reusable

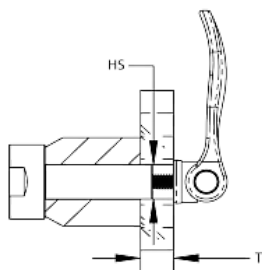
Works with multiple form thicknesses and materials, including wood and steel

SPECIFICATIONS

Table 1/1

Catalog Number	Handle Length	Hole Size (HS)	Form Thickness (FT)	Unit Weight
LK815	4.38"	0.75"	0.50" - 1.63"	0.5 lb

DIAGRAMS



WARNING

nVent products shall be installed and used only as indicated in nVent's product instruction sheets and training materials. Instruction sheets are available at www.nvent.com and from your nVent customer service representative. Improper installation, misuse, misapplication or other failure to completely follow nVent's instructions and warnings may cause product malfunction, property damage, serious bodily injury and death and/or void your warranty.

North America

+1.800.753.9221

Option 1 – Customer Care

Option 2 – Technical

Support

Europe

Netherlands:

+31 800-0200135

France:

+33 800 901 793

Europe

Germany:

800 1890272

Other Countries:

+31 13 5835404

APAC

Shanghai:

+ 86 21 2412 1618/19

Sydney:

+61 2 9751 8500



Our powerful portfolio of brands:

CADDY

ERICO

HOFFMAN

ILSCO

SCHROFF

TRACHTE