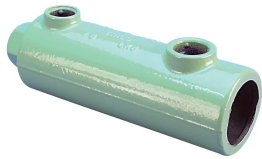


nVent LENTON Interlok Standard Grout-Fill Coupler, Coated



Coated reinforcing bar is used in place of plain reinforcing bars to protect against corrosion. Typical applications include bridges, parking structures, pavement, marine structures and repair work. nVent LENTON couplers and mechanical anchors are available in multiple coatings to meet specific job requirements.

FEATURES

Designed to splice the same diameter bars

Smaller bars can be installed into the over-sized cavity end if required

Over-sized cavity allows for greater field tolerance

Taper-threaded end helps prevent movement of the reinforcing bars and eliminate misalignment

Requires less grout than most competitive systems

Multiple coatings available

SPECIFICATIONS

Material: Cast Iron

Table 1/2

Catalog Number	Finish	Finish Standard	Rebar Size, US	Rebar Size, Canada	Diameter 1 (Ø1)	Diameter 2 (Ø2)
LK5GV	Hot-Dip Galvanized	ASTM® A767 Class I	#5	15M	2.56"	1.88"
LK6ES	Epoxy Coated	ASTM® A775/A775M and AASHTO M284	#6	20M	2.56"	1.88"
LK6GV	Hot-Dip Galvanized	ASTM® A767 Class I	#6	20M	2.56"	1.88"

CatalogNumber	Finish	Finish Standard	Rebar Size, US	Rebar Size, Canada	Diameter 1(Ø1)	Diameter 2(Ø2)
LK7ES	Epoxy Coated	ASTM® A775/A775M and AASHTO M284	#7		2.56"	1.88"
LK7GV	Hot-Dip Galvanized	ASTM® A767 Class I	#7		2.56"	1.88"
LK8ES	Epoxy Coated	ASTM® A775/A775M and AASHTO M284	#8	25M	2.69"	2"
LK8GV	Hot-Dip Galvanized	ASTM® A767 Class I	#8	25M	2.69"	2"
LK9ES	Epoxy Coated	ASTM® A775/A775M and AASHTO M284	#9	25M	2.81"	2.13"
LK9GV	Hot-Dip Galvanized	ASTM® A767 Class I	#9	30M	2.81"	2.13"
LK10ES	Epoxy Coated	ASTM® A775/A775M and AASHTO M284	#10		3"	2.31"
LK10GV	Hot-Dip Galvanized	ASTM® A767 Class I	#10		3"	2.31"
LK11ES	Epoxy Coated	ASTM® A775/A775M and AASHTO M284	#11	35M	3.13"	2.44"
LK11GV	Hot-Dip Galvanized	ASTM® A767 Class I	#11	35M	3.13"	2.44"
LKT14GV	Hot-Dip Galvanized	ASTM® A767 Class I	#14	45M	3.69"	2 3/4"
LKT18GV	Hot-Dip Galvanized	ASTM® A767 Class I	#18	55M	4 1/2"	3 1/4"

Table 2/2

Catalog Number	Length 1 (L1)	Length 2 (L2)	Bar Depth (BD)	Unit Weight
LK5GV	7.88"	6.13"	0.86"	4.4 lb
LK6ES	7.88"	6.13"	1.09"	4.3 lb

Catalog Number	Length 1 (L1)	Length 2 (L2)	Bar Depth (BD)	Unit Weight
LK6GV	7.88"	6.13"	1.09"	4.3 lb
LK7ES	7.88"	6.13"	1.26"	4.3 lb
LK7GV	7.88"	6.13"	1.26"	4.3 lb
LK8ES	8.62"	7"	1.36"	4.8 lb
LK8GV	8.62"	7"	1.36"	4.7 lb
LK9ES	9 3/4"	8"	1.49"	5.4 lb
LK9GV	9 3/4"	8"	1.49"	5.4 lb
LK10ES	10.81"	9"	1.58"	6.3 lb
LK10GV	10.81"	9"	1.58"	6.3 lb
LK11ES	12"	9.88"	1.68"	8 lb
LK11GV	12"	9.88"	1.68"	8 lb
LKT14GV	15.19"	12 3/4"	2.2"	16 lb
LKT18GV	20.38"	17"	2.81"	44 lb

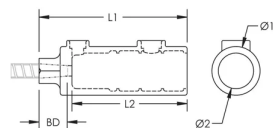
Designed to Meet: AASHTO;ABNT NBR 8548:1984;ACI 318 Type 1 (125% Specified Yield);ACI 318 Type 2 (Specified Tensile);ACI 349;ACI 359;AS3600

ADDITIONAL PRODUCT DETAILS

Bar dimensions and weights listed may vary by region. Coupler sizes not shown may be available by special order. Contact your nVent LENTON representative for more information.

Prior to installation, please read and understand the detailed instructions and safety notices provided in the nVent LENTON Interlok Instruction Manual.

DIAGRAMS



WARNING

nVent products shall be installed and used only as indicated in nVent's product instruction sheets and training materials. Instruction sheets are available at www.nvent.com and from your nVent customer service representative. Improper installation, misuse, misapplication or other failure to completely follow nVent's instructions and warnings may cause product malfunction, property damage, serious bodily injury and death and/or void your warranty.

North America

+1.800.753.9221
Option 1 – Customer Care
Option 2 – Technical
Support

Europe

Netherlands:
+31 800-0200135
France:
+33 800 901 793

Europe

Germany:
800 1890272
Other Countries:
+31 13 5835404

APAC

Shanghai:
+ 86 21 2412 1618/19
Sydney:
+61 2 9751 8500



Our powerful portfolio of brands:

CADDY ERICO HOFFMAN ILSCO SCHROFF TRACHTE