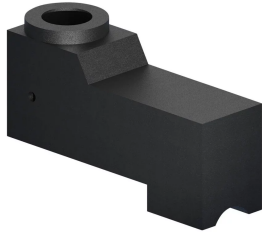


# Horizontal Pouring Basin, Top Fill, Extended



Extended top fill horizontal pouring basins are used when structural interferences are directly above the tap hole in the sleeve.

## FEATURES

Made from heat-resistant graphite

Durable, re-usable and long lasting

Designed for use with T-Series and B-Series horizontal top fill sleeves

## SPECIFICATIONS

**Material:** Graphite

Table 1/1

Catalog Number	Diameter (Ø)	Length 1 (L1)	Length 2 (L2)	Width (W)	Height 1 (H1)	Height 2 (H2)
RBHA9735U	1.38"	9 3/4"	2 3/4"	3"	5 1/2"	3.63"
RBHA6037F	2 1/2"	6"	2 3/4"	3"	5 1/2"	3.88"
RBHA9735X	1 1/2"	9 3/4"	2 3/4"	3"	5 1/2"	3.63"
RBHA9740A	1.63"	9 3/4"	2 3/4"	3"	5 1/2"	4"
RBHA7037J	3"	7"	2 3/4"	3"	5 1/2"	3.88"
RBHA9740C	1.88"	9 3/4"	2 3/4"	3"	5 1/2"	4"

CatalogNumber	Diameter (Ø)	Length 1 (L1)	Length 2 (L2)	Width (W)	Height 1 (H1)	Height 2 (H2)
RBHA9037M	3 3/4"	9"	2 3/4"	3"	5 1/2"	3.88"
RBHA6050E	2 1/4"	6"	2 3/4"	3"	5 1/2"	5"
RBHA6050F	2 1/2"	6"	2 3/4"	3"	5 1/2"	5"

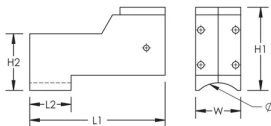
## ADDITIONAL PRODUCT DETAILS

RBHA pouring basins require one RBM2890S pouring basin frame (sold separately).

Prior to installation, please read and understand all of the detailed instructions and safety notices provided in the nVent LENTON Cadweld Rebar Splicing System Instruction Manual.

Sizes not shown may be available by special order. Contact your nVent LENTON representative for more information.

## DIAGRAMS



## WARNING

nVent products shall be installed and used only as indicated in nVent's product instruction sheets and training materials. Instruction sheets are available at [www.nvent.com](http://www.nvent.com) and from your nVent customer service representative. Improper installation, misuse, misapplication or other failure to completely follow nVent's instructions and warnings may cause product malfunction, property damage, serious bodily injury and death and/or void your warranty.

### North America

+1.800.753.9221

Option 1 – Customer Care

Option 2 – Technical

Support

### Europe

Netherlands:

+31 800-0200135

France:

+33 800 901 793

### Europe

Germany:

800 1890272

Other Countries:

+31 13 5835404

### APAC

Shanghai:

+ 86 21 2412 1618/19

Sydney:

+61 2 9751 8500



Our powerful portfolio of brands:

CADDY

ERICO

HOFFMAN

ILSCO

SCHROFF

TRACHTE