

Horizontal Pouring Basin, Side Fill, Extended



Extended side fill horizontal pouring basins are used when interferences of the structure will not allow top filling of the sleeve and the interferences are directly next to the tap hole in the sleeve.

FEATURES

Made from heat-resistant graphite

Durable, re-usable and long lasting

Designed for use with T-Series and B-Series horizontal side fill sleeves

SPECIFICATIONS

Material: Graphite

Table 1/1

Catalog Number	Diameter (Ø)	Length 1 (L1)	Length 2 (L2)	Width (W)	Height 1 (H1)	Height 2 (H2)
RBHSA9750X	1 1/2"	9 3/4"	1 1/2"	3"	5"	3"
RBHSB10560X	1 1/2"	10 1/2"	1 1/2"	3"	6"	3"
RBHSB12065X	1 1/2"	12"	1 1/2"	3"	6 1/2"	3"
RBHSA9050D	2.13"	9"	1 1/2"	3"	5"	3"
RBHSA9050F	2 1/2"	9"	1 1/2"	3"	5"	3"
RBHSA9560M	3 3/4"	9 1/2"	1 1/2"	3"	6"	3"

CatalogNumber	Diameter (Ø)	Length 1 (L1)	Length 2 (L2)	Width (W)	Height 1 (H1)	Height 2 (H2)
RBHSB12065C	1.88"	12"	1 1/2"	3"	6 1/2"	3"
RBHSB12065F	2 1/2"	12"	1 1/2"	3"	6 1/2"	3"
RBHSB12065J	3"	12"	1 1/2"	3"	6 1/2"	3"
RBHSB12065M	3 3/4"	12"	1 1/2"	3"	6 1/2"	3"
RBHSB14065F	2 1/2"	14"	1 1/2"	3"	6 1/2"	3"
RBHSB14065J	3"	14"	1 1/2"	3"	6 1/2"	3"
RBHSB14070D	2.13"	14"	1 1/2"	3"	7"	3"
RBHSB14075M	3 3/4"	14"	1 1/2"	3"	7 1/2"	3"
RBHSB16070F	2 1/2"	16"	1 1/2"	3"	7"	3"
RBHSB17070C	1.88"	17"	1 1/2"	3"	7"	3"
RBHSB177550 M	3 3/4"	17 3/4"	1 1/2"	3"	5"	3"
RBHSC23010M	3 3/4"	23"	1 1/2"	3"	10"	3"
RBHSC23075M	3 3/4"	23"	1 1/2"	3"	7 1/2"	3"
RBHSC30070D	2.13"	30"	1 1/2"	3"	7"	3"

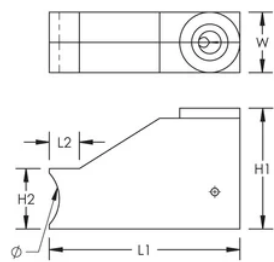
ADDITIONAL PRODUCT DETAILS

RBHSA pouring basins require one RBW332 pouring basin frame and two RBS5000 bolt retainers. RBHSB pouring basins require one RBW3321 pouring basin frame and one RBS5000 bolt retainer. RBHSC pouring basins require one RBW3322 pouring basin frame and one RBS5000 bolt retainer (all sold separately).

Prior to installation, please read and understand all of the detailed instructions and safety notices provided in the nVent LENTON Cadweld Rebar Splicing System Instruction Manual.

Sizes not shown may be available by special order. Contact your nVent LENTON representative for more information.

DIAGRAMS



WARNING

nVent products shall be installed and used only as indicated in nVent's product instruction sheets and training materials. Instruction sheets are available at www.nvent.com and from your nVent customer service representative. Improper installation, misuse, misapplication or other failure to completely follow nVent's instructions and warnings may cause product malfunction, property damage, serious bodily injury and death and/or void your warranty.

North America

+1.800.753.9221
Option 1 – Customer Care
Option 2 – Technical
Support

Europe

Netherlands:
+31 800-0200135
France:
+33 800 901 793

Europe

Germany:
800 1890272
Other Countries:
+31 13 5835404

APAC

Shanghai:
+ 86 21 2412 1618/19
Sydney:
+61 2 9751 8500



Our powerful portfolio of brands:

CADDY ERICO HOFFMAN ILSCO SCHROFF TRACHTE