

ELICP Internal Plastic nVent LENTON Form Saver Plug for A2 Couplers



FEATURES

Designed for use with the A2 coupler families

Designed to keep dirt, water and concrete slurry out of the coupler during the concrete pour

Durable mounting plates allow for easy attachment to forms

O-ring provides hydraulic seal

Color coded for the appropriate coupler size

SPECIFICATIONS

Material: High Density Polyethylene (HDPE)

Table 1/2

Catalog Number	Rebar Size, US	Rebar Size, Canada	Width 1 (W1)	Width 2 (W2)	A	Height (H)
ELICP20	#6	20M	2.25"	0.5"	0.39"	0.44"
ELICP22	#7		2.38"	0.5"	0.52"	0.44"
ELICP25	#8	25M	2.5"	0.5"	0.52"	0.44"
ELICP28	#9	30M	2.63"	0.5"	0.52"	0.44"

CatalogNumber	Rebar Size, US	Rebar Size, Canada	Width 1 (W1)	Width 2 (W2)	A	Height (H)
ELICP32	#10		2.75"	0.5"	0.52"	0.44"
ELICP36	#11	35M	2.94"	0.5"	0.52"	0.44"
ELICP43	#14	45M	3.25"	0.5"	0.52"	0.44"
ELICP57	#18	55M	4"	0.5"	0.52"	0.44"

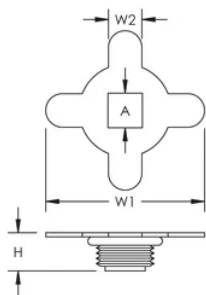
Table 2/2

Catalog Number	Color
ELICP20	Yellow
ELICP22	Blue
ELICP25	Red
ELICP28	Black
ELICP32	Yellow
ELICP36	Blue
ELICP43	Red
ELICP57	Blue

ADDITIONAL PRODUCT DETAILS

ELICP36 can also be used with P8/P9 position couplers for form saving applications (sizes 20, 22, 25 only).

DIAGRAMS



WARNING

nVent products shall be installed and used only as indicated in nVent's product instruction sheets and training materials. Instruction sheets are available at www.nvent.com and from your nVent customer service representative. Improper installation, misuse, misapplication or other failure to completely follow nVent's instructions and warnings may cause product malfunction, property damage, serious bodily injury and death and/or void your warranty.

North America

+1.800.753.9221
Option 1 – Customer Care
Option 2 – Technical
Support

Europe

Netherlands:
+31 800-0200135
France:
+33 800 901 793

Europe

Germany:
800 1890272
Other Countries:
+31 13 5835404

APAC

Shanghai:
+ 86 21 2412 1618/19
Sydney:
+61 2 9751 8500



Our powerful portfolio of brands:

CADDY ERICO HOFFMAN ILSCO SCHROFF TRACHTE