

# ELFB Taper Form Bolt



The ELFB taper bolt is used to firmly attach a nVent LENTON taper-threaded coupler onto formwork in precast and cast-in-place construction. This reusable form saving accessory allows forms to be pre-drilled with the correct spacing of the reinforcing steel, which speeds construction and allows the forms to be re-used on repetitive construction elements. This system can be used in conjunction with coupler boxes to eliminate the use of bend-out-boxes and also helps eliminate protruding dowel bars.

The screw-in bolt is designed to keep dirt, water and concrete slurry out of the coupler during the concrete pour. The bolt eliminates the need for form saving plates and simplifies the use of standard couplers in form saving applications.

## FEATURES

Multiple lengths available depending on form thickness

Used in both form saving and coupler box applications

Bar end protector included to protect the nVent LENTON taper thread

Durable, re-usable and long lasting

Saves time and money

## SPECIFICATIONS

**Material:** Steel

Table 1/2

| Catalog Number | Nut Included | Form Thickness (FT) | Rebar Size, US | Rebar Size, Canada | Length (L) | Outer Diameter (OD) |
|----------------|--------------|---------------------|----------------|--------------------|------------|---------------------|
| ELFB10X003     | No           | 0.13"               | #3             |                    | 0.83"      | 0.47"               |
| ELFB12X003     | No           | 0.13"               | #4             | 10M                | 0.84"      | 0.55"               |
| ELFB10X020     | Yes          | 0.13" - 0.75"       | #3             |                    | 2.17"      | 0.47"               |

| CatalogNumber | Nut Included | FormThickness (FT) | Rebar Size, US | Rebar Size, Canada | Length (L) | Outer Diameter (OD) |
|---------------|--------------|--------------------|----------------|--------------------|------------|---------------------|
| ELFB12X010    | No           | 0.13" - 0.39"      | #4             | 10M                | 1.12"      | 0.55"               |
| ELFB14X003    | No           | 0.13"              |                |                    | 0.98"      | 0.63"               |
| ELFB10X040    | Yes          | 0.13" - 1.5"       | #3             |                    | 2.95"      | 0.47"               |
| ELFB12X020    | Yes          | 0.13" - 0.75"      | #4             | 10M                | 2.36"      | 0.55"               |
| ELFB16X003    | No           | 0.13"              | #5             | 15M                | 1.09"      | 0.79"               |
| ELFB18X003    | No           | 0.13"              |                |                    | 1.3"       | 0.79"               |
| ELFB20X003    | No           | 0.13"              | #6             | 20M                | 1.48"      | 0.94"               |
| ELFB22X003    | No           | 0.13"              | #7             |                    | 1.57"      | 0.94"               |
| ELFB25X003    | No           | 0.13"              | #8             | 25M                | 1.68"      | 1.18"               |
| ELFB28X003    | No           | 0.13"              | #9             | 30M                | 1.76"      | 1.18"               |
| ELFB30X003    | No           | 0.13"              |                |                    | 2.15"      | 1.18"               |
| ELFB32X003    | No           | 0.13"              | #10            |                    | 1.94"      | 1.42"               |
| ELFB34X003    | No           | 0.13"              |                |                    | 2.33"      | 1.42"               |
| ELFB36X003    | No           | 0.13"              | #11            | 35M                | 2.2"       | 1.42"               |
| ELFB16X010    | No           | 0.13" - 0.39"      | #5             | 15M                | 1.37"      | 0.79"               |
| ELFB20X010    | No           | 0.13" - 0.39"      | #6             | 20M                | 1.76"      | 0.94"               |
| ELFB14X020    | Yes          | 0.13" - 0.75"      |                |                    | 2.56"      | 0.63"               |
| ELFB16X020    | Yes          | 0.13" - 0.75"      | #5             | 15M                | 2.76"      | 0.79"               |

| CatalogNumber | Nut Included | FormThickness (FT) | Rebar Size, US | Rebar Size, Canada | Length (L) | Outer Diameter (OD) |
|---------------|--------------|--------------------|----------------|--------------------|------------|---------------------|
| ELFB18X020    | Yes          | 0.13" - 0.75"      |                |                    | 2.95"      | 0.79"               |
| ELFB20X020    | Yes          | 0.13" - 0.75"      | #6             | 20M                | 3.54"      | 0.94"               |
| ELFB22X020    | Yes          | 0.13" - 0.75"      | #7             |                    | 3.54"      | 0.94"               |
| ELFB25X020    | Yes          | 0.13" - 0.75"      | #8             | 25M                | 3.94"      | 1.18"               |
| ELFB28X020    | Yes          | 0.13" - 0.75"      | #9             | 30M                | 3.94"      | 1.18"               |
| ELFB30X020    | Yes          | 0.13" - 0.75"      |                |                    | 4.33"      | 1.18"               |
| ELFB32X020    | Yes          | 0.13" - 0.75"      | #10            |                    | 4.33"      | 1.42"               |
| ELFB34X020    | Yes          | 0.13" - 0.75"      |                |                    | 4.72"      | 1.42"               |
| ELFB36X020    | Yes          | 0.13" - 0.75"      | #11            | 35M                | 4.53"      | 1.42"               |
| ELFB12X040    | Yes          | 0.13" - 1.5"       | #4             | 10M                | 3.15"      | 0.55"               |
| ELFB14X040    | Yes          | 0.13" - 1.5"       |                |                    | 3.35"      | 0.63"               |
| ELFB16X040    | Yes          | 0.13" - 1.5"       | #5             | 15M                | 3.54"      | 0.79"               |
| ELFB18X040    | Yes          | 0.13" - 1.5"       |                |                    | 3.74"      | 0.79"               |
| ELFB20X040    | Yes          | 0.13" - 1.5"       | #6             | 20M                | 4.13"      | 0.94"               |
| ELFB22X040    | Yes          | 0.13" - 1.5"       | #7             |                    | 4.33"      | 0.94"               |
| ELFB25X040    | Yes          | 0.13" - 1.5"       | #8             | 25M                | 4.53"      | 1.18"               |
| ELFB28X040    | Yes          | 0.13" - 1.5"       | #9             | 30M                | 4.72"      | 1.18"               |
| ELFB30X040    | Yes          | 0.13" - 1.5"       |                |                    | 5.12"      | 1.18"               |

| CatalogNumber | Nut Included | FormThickness (FT) | Rebar Size, US | Rebar Size, Canada | Length (L) | Outer Diameter (OD) |
|---------------|--------------|--------------------|----------------|--------------------|------------|---------------------|
| ELFB32X040    | Yes          | 0.13" - 1.5"       | #10            |                    | 5.12"      | 1.42"               |
| ELFB34X040    | Yes          | 0.13" - 1.5"       |                |                    | 5.51"      | 1.42"               |
| ELFB36X040    | Yes          | 0.13" - 1.5"       | #11            | 35M                | 5.31"      | 1.42"               |

| Table 2/2      |                   |             |                   |
|----------------|-------------------|-------------|-------------------|
| Catalog Number | Socket Width (SW) | Unit Weight | Number of Washers |
| ELFB10X003     | 3/4"              | 0.1 lb      | 2                 |
| ELFB12X003     | 13/16"            | 0.1 lb      | 2                 |
| ELFB10X020     | 3/4"              | 0.2 lb      | 1                 |
| ELFB12X010     | 13/16"            | 0.2 lb      | 4                 |
| ELFB14X003     | 15/16"            | 0.2 lb      | 2                 |
| ELFB10X040     | 3/4"              | 0.2 lb      | 1                 |
| ELFB12X020     | 13/16"            | 0.3 lb      | 1                 |
| ELFB16X003     | 1 1/4"            | 0.3 lb      | 2                 |
| ELFB18X003     | 1 1/4"            | 0.4 lb      | 2                 |
| ELFB20X003     | 1 1/2"            | 0.6 lb      | 2                 |
| ELFB22X003     | 1 1/2"            | 0.6 lb      | 2                 |
| ELFB25X003     | 1 7/8"            | 1.2 lb      | 2                 |
| ELFB28X003     | 1 7/8"            | 1.2 lb      | 2                 |
| ELFB30X003     | 1 7/8"            | 1.6 lb      | 4                 |

| Catalog Number | Socket Width (SW) | Unit Weight | Number of Washers |
|----------------|-------------------|-------------|-------------------|
| ELFB32X003     | 2 1/4"            | 2 lb        | 2                 |
| ELFB34X003     | 2 1/4"            | 2.6 lb      | 4                 |
| ELFB36X003     | 2 1/4"            | 2.2 lb      | 2                 |
| ELFB16X010     | 1 1/4"            | 0.4 lb      | 4                 |
| ELFB20X010     | 1 1/2"            | 0.8 lb      | 4                 |
| ELFB14X020     | 15/16"            | 0.4 lb      | 1                 |
| ELFB16X020     | 1 1/4"            | 0.7 lb      | 1                 |
| ELFB18X020     | 1 1/4"            | 0.7 lb      | 1                 |
| ELFB20X020     | 1 1/2"            | 1.2 lb      | 1                 |
| ELFB22X020     | 1 1/2"            | 1.2 lb      | 1                 |
| ELFB25X020     | 1 7/8"            | 2.3 lb      | 1                 |
| ELFB28X020     | 1 7/8"            | 2.3 lb      | 1                 |
| ELFB30X020     | 1 7/8"            | 2.5 lb      | 1                 |
| ELFB32X020     | 2 1/4"            | 3.8 lb      | 1                 |
| ELFB34X020     | 2 1/4"            | 4 lb        | 1                 |
| ELFB36X020     | 2 1/4"            | 4 lb        | 1                 |
| ELFB12X040     | 13/16"            | 0.3 lb      | 1                 |
| ELFB14X040     | 15/16"            | 0.4 lb      | 1                 |

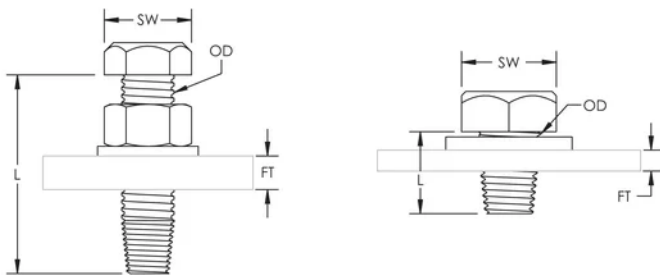
| Catalog Number | Socket Width (SW) | Unit Weight | Number of Washers |
|----------------|-------------------|-------------|-------------------|
| ELFB16X040     | 1 1/4"            | 0.8 lb      | 1                 |
| ELFB18X040     | 1 1/4"            | 0.8 lb      | 1                 |
| ELFB20X040     | 1 1/2"            | 1.3 lb      | 1                 |
| ELFB22X040     | 1 1/2"            | 1.4 lb      | 1                 |
| ELFB25X040     | 1 7/8"            | 2.4 lb      | 1                 |
| ELFB28X040     | 1 7/8"            | 2.6 lb      | 1                 |
| ELFB30X040     | 1 7/8"            | 2.7 lb      | 1                 |
| ELFB32X040     | 2 1/4"            | 4.1 lb      | 1                 |
| ELFB34X040     | 2 1/4"            | 4.3 lb      | 1                 |
| ELFB36X040     | 2 1/4"            | 4.3 lb      | 1                 |

## ADDITIONAL PRODUCT DETAILS

Length dimension is for reference only.

Sizes not shown may be available by special order. Contact your nVent LENTON representative for more information.

## DIAGRAMS



**WARNING**

nVent products shall be installed and used only as indicated in nVent's product instruction sheets and training materials. Instruction sheets are available at [www.nvent.com](http://www.nvent.com) and from your nVent customer service representative. Improper installation, misuse, misapplication or other failure to completely follow nVent's instructions and warnings may cause product malfunction, property damage, serious bodily injury and death and/or void your warranty.

**North America**

+1.800.753.9221  
Option 1 – Customer Care  
Option 2 – Technical  
Support

**Europe**

Netherlands:  
+31 800-0200135  
France:  
+33 800 901 793

**Europe**

Germany:  
800 1890272  
Other Countries:  
+31 13 5835404

**APAC**

Shanghai:  
+ 86 21 2412 1618/19  
Sydney:  
+61 2 9751 8500



Our powerful portfolio of brands:

**CADDY   ERICO   HOFFMAN   ILSCO   SCHROFF   TRACHTE**