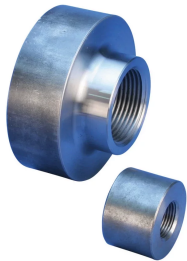


# D6 Mechanical Anchor, Plain



## CERTIFICATIONS



## FEATURES

Replaces conventional hooked reinforcing bar

Simplifies reinforcing bar placement and lowers placing costs

Head area exceeds 5x bar area (net 4x)

## SPECIFICATIONS

**Finish:** Plain

**Material:** Steel

**100% U.S. Domestic Content:** Yes

Table 1/2

Catalog Number	Rebar Size, US	Rebar Size, Canada	Diameter 1 (Ø1)	Diameter 2 (Ø2)	Length 1 (L1)	Length 2 (L2)
EL12D6	#4	10M	1.38"		0.56"	
EL16D6	#5	15M	1.5"		0.88"	

CatalogNumber	Rebar Size, US	Rebar Size, Canada	Diameter 1(Ø1)	Diameter 2(Ø2)	Length 1 (L1)	Length 2 (L2)
EL20D6	#6	20M	1.88"		1.13"	
EL22D6	#7		2"		1.25"	
EL25D6	#8	25M	2.25"		1.38"	
EL38D6	#12		3.5"	3.15"	1.75"	0.75"
EL28D6	#9	30M	2.75"		1.5"	
EL43TD6	#14	45M	4"	3.15"	2.13"	1.13"
EL40D6			3.75"	3.15"	2.17"	1.17"
EL32D6	#10		3"		1.56"	
EL36D6	#11	35M	3.25"		1.69"	
EL57TD6	#18	55M	5.13"	3.15"	2.75"	1.75"

Table 2/2

Catalog Number	Unit Weight	Certifications
EL12D6	0.2 lb	IAPMO®-UES
EL16D6	0.5 lb	IAPMO®-UES
EL20D6	0.8 lb	IAPMO®-UES
EL22D6	0.9 lb	IAPMO®-UES
EL25D6	1.49 lb	IAPMO®-UES
EL38D6	3.99 lb	
EL28D6	1.87 lb	IAPMO®-UES

Catalog Number	Unit Weight	Certifications
EL43TD6	5.1 lb	IAPMO®-UES
EL40D6	3.99 lb	IAPMO®-UES
EL32D6	2.6 lb	IAPMO®-UES
EL36D6	3.1 lb	IAPMO®-UES
EL57TD6	10.1 lb	IAPMO®-UES

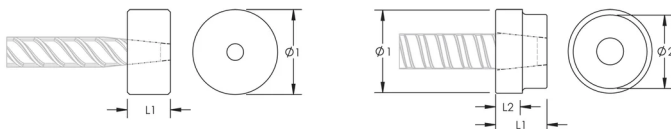
**Designed to Meet:** ACI 318;AS3600;ASTM A970

## ADDITIONAL PRODUCT DETAILS

Bar dimensions and weights listed may vary by region. Coupler sizes not shown may be available by special order. Contact your nVent LENTON representative for more information.

Thread does not need to be flush with end of nVent LENTON Terminator. Thread may be +/- 2 threads from backside of coupler.

## DIAGRAMS



## WARNING

nVent products shall be installed and used only as indicated in nVent's product instruction sheets and training materials. Instruction sheets are available at [www.nvent.com](http://www.nvent.com) and from your nVent customer service representative. Improper installation, misuse, misapplication or other failure to completely follow nVent's instructions and warnings may cause product malfunction, property damage, serious bodily injury and death and/or void your warranty.

#### North America

+1.800.753.9221

Option 1 – Customer Care

Option 2 – Technical

Support

#### Europe

Netherlands:

+31 800-0200135

France:

+33 800 901 793

#### Europe

Germany:

800 1890272

Other Countries:

+31 13 5835404

#### APAC

Shanghai:

+ 86 21 2412 1618/19

Sydney:

+61 2 9751 8500



Our powerful portfolio of brands:

**CADDY**

**ERICO**

**HOFFMAN**

**ILSCO**

**SCHROFF**

**TRACHTE**