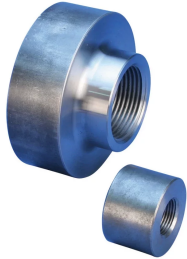


D6 Mechanical Anchor for Nuclear Applications



The nuclear industry demands scrutiny throughout the entire product life-cycle. nVent LENTON products produced under nVent's nuclear quality systems receive the utmost attention to detail and can meet the high demands of the nuclear industry. These quality systems are designed to include compliance to ASME NCA-3800 (ERICO - QSC 595), NQA-1, 10CFR50 Appendix B, 10CFR 50.55(e), 10CFR Part 21 and USNRC Regulatory Guide 1.28. nVent LENTON products produced for nuclear applications are assigned unique part numbers to ensure detailed product documentation and full product traceability in accordance with demanding industry expectations.

FEATURES

Replaces conventional hooked reinforcing bar

Simplifies reinforcing bar placement and lowers placing costs

Head area exceeds 5x bar area (net 4x)

SPECIFICATIONS

Finish: Plain

Material: Steel

100% U.S. Domestic Content: Yes

Table 1/2

Catalog Number	Rebar Size, US	Rebar Size, Canada	Diameter 1 (Ø1)	Diameter 2 (Ø2)	Length 1 (L1)	Length 2 (L2)
EL12D6Q	#4	10M	1.38"		0.56"	
EL16D6Q	#5	15M	1 1/2"		0.88"	
EL20D6Q	#6	20M	1.88"		1.13"	
EL22D6Q	#7		2"		1 1/4"	
EL25D6Q	#8	25M	2 1/4"		1.38"	

CatalogNumber	Rebar Size, US	Rebar Size, Canada	Diameter 1(Ø1)	Diameter 2(Ø2)	Length 1 (L1)	Length 2 (L2)
EL28D6Q	#9	30M	2 3/4"		1 1/2"	
EL40D6Q			4"	3.15"	2.17"	1"
EL43TD6Q	#14	45M	4"	3.15"	2.13"	1"
EL57TD6Q	#18	55M	5.13"	3.15"	2 3/4"	1"
EL32D6Q	#10		3"		1.56"	
EL36D6Q	#11	35M	3 1/4"		1.69"	

Table 2/2

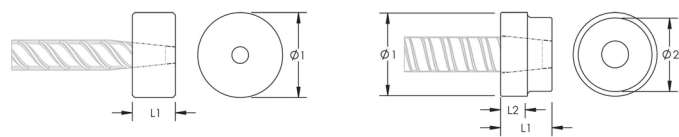
Catalog Number	Unit Weight
EL12D6Q	0.2 lb
EL16D6Q	0.4 lb
EL20D6Q	0.8 lb
EL22D6Q	0.9 lb
EL25D6Q	1.3 lb
EL28D6Q	2.2 lb
EL40D6Q	4.98 lb
EL43TD6Q	5.39 lb
EL57TD6Q	10.49 lb
EL32D6Q	2.6 lb
EL36D6Q	3.3 lb

ADDITIONAL PRODUCT DETAILS

Bar dimensions and weights listed may vary by region. Coupler sizes not shown may be available by special order. Contact your nVent LENTON representative for more information.

Thread does not need to be flush with end of nVent LENTON Terminator. Thread may be +/- 2 threads from backside of coupler.

DIAGRAMS



WARNING

nVent products shall be installed and used only as indicated in nVent's product instruction sheets and training materials. Instruction sheets are available at www.nvent.com and from your nVent customer service representative. Improper installation, misuse, misapplication or other failure to completely follow nVent's instructions and warnings may cause product malfunction, property damage, serious bodily injury and death and/or void your warranty.

North America

+1.800.753.9221
Option 1 – Customer Care
Option 2 – Technical
Support

Europe

Netherlands:
+31 800-0200135
France:
+33 800 901 793

Europe

Germany:
800 1890272
Other Countries:
+31 13 5835404

APAC

Shanghai:
+ 86 21 2412 1618/19
Sydney:
+61 2 9751 8500



Our powerful portfolio of brands:

CADDY ERICO HOFFMAN ILSCO SCHROFF TRACHTE