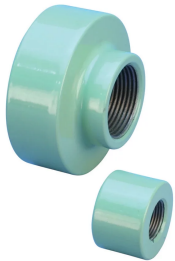


# D6 Mechanical Anchor, Coated



Coated reinforcing bar is used in place of plain reinforcing bars to protect against corrosion. Typical applications include bridges, parking structures, pavement, marine structures and repair work. nVent LENTON couplers and mechanical anchors are available in multiple coatings to meet specific job requirements.

## FEATURES

Replaces conventional hooked reinforcing bar

Simplifies reinforcing bar placement and lowers placing costs

Head area exceeds 5x bar area (net 4x)

Multiple coatings available

## SPECIFICATIONS

**Material:** Steel

**100% U.S. Domestic Content:** Yes

Table 1/2

Catalog Number	Finish	Finish Standard	Rebar Size, US	Rebar Size, Canada	Diameter 1 (Ø1)	Diameter 2 (Ø2)
EL12D6ES	Epoxy Coated	ASTM® A775/A775M and AASHTO M284	#4	10M	1.38"	
EL12D6GV	Hot-Dip Galvanized	ASTM® A767 Class I	#4	10M	1.38"	
EL16D6ES	Epoxy Coated	ASTM® A775/A775M and AASHTO M284	#5	15M	1 1/2"	
EL16D6GV	Hot-Dip Galvanized	ASTM® A767 Class I	#5	15M	1 1/2"	

CatalogNumber	Finish	Finish Standard	Rebar Size, US	Rebar Size, Canada	Diameter 1(Ø1)	Diameter 2(Ø2)
EL16D6MG	Mechanical Galvanized	ASTM® B695 Class 50 with Clear Trivalent Chromate Seal	#5	15M	1 1/2"	
EL20D6ES	Epoxy Coated	ASTM® A775/A775M and AASHTO M284	#6	20M	1.88"	
EL20D6GV	Hot-Dip Galvanized	ASTM® A767 Class I	#6	20M	1.88"	
EL22D6ES	Epoxy Coated	ASTM® A775/A775M and AASHTO M284	#7		2"	
EL22D6GV	Hot-Dip Galvanized	ASTM® A767 Class I	#7		2"	
EL25D6ES	Epoxy Coated	ASTM® A775/A775M and AASHTO M284	#8	25M	2 1/4"	
EL25D6GV	Hot-Dip Galvanized	ASTM® A767 Class I	#8	25M	2 1/4"	
EL25D6MG	Mechanical Galvanized	ASTM® B695 Class 50 with Clear Trivalent Chromate Seal	#8	25M	2 1/4"	
EL28D6ES	Epoxy Coated	ASTM® A775/A775M and AASHTO M284	#9	30M	2 3/4"	
EL28D6GV	Hot-Dip Galvanized	ASTM® A767 Class I	#9	30M	2 3/4"	
EL43TD6ES	Epoxy Coated	ASTM® A775/A775M and AASHTO M284	#14	45M	4"	3.15"
EL43TD6GV	Hot-Dip Galvanized	ASTM® A767 Class I	#14	45M	4"	3.15"
EL57TD6ES	Epoxy Coated	ASTM® A775/A775M and AASHTO M284	#18	55M	5.13"	3.15"

CatalogNumber	Finish	Finish Standard	Rebar Size, US	Rebar Size, Canada	Diameter 1(Ø1)	Diameter 2(Ø2)
EL57TD6GV	Hot-Dip Galvanized	ASTM® A767 Class I	#18	55M	5.13"	3.15"
EL32D6ES	Epoxy Coated	ASTM® A775/A775M and AASHTO M284	#10		3"	
EL32D6GV	Hot-Dip Galvanized	ASTM® A767 Class I	#10		3"	
EL36D6ES	Epoxy Coated	ASTM® A775/A775M and AASHTO M284	#11	35M	3 1/4"	
EL36D6GV	Hot-Dip Galvanized	ASTM® A767 Class I	#11	35M	3 1/4"	
EL36D6MG	Mechanical Galvanized	ASTM® B695 Class 50 with Clear Trivalent Chromate Seal	#11	35M	3 1/4"	

Table 2/2

Catalog Number	Length 1 (L1)	Length 2 (L2)	Unit Weight
EL12D6ES	0.56"		0.2 lb
EL12D6GV	0.56"		0.2 lb
EL16D6ES	0.88"		0.4 lb
EL16D6GV	0.88"		0.4 lb
EL16D6MG	0.88"		0.4 lb
EL20D6ES	1.13"		0.8 lb
EL20D6GV	1.13"		0.8 lb
EL22D6ES	1 1/4"		0.9 lb
EL22D6GV	1 1/4"		0.9 lb

Catalog Number	Length 1 (L1)	Length 2 (L2)	Unit Weight
EL25D6ES	1.38"		1.3 lb
EL25D6GV	1.38"		1.3 lb
EL25D6MG	1.38"		1.3 lb
EL28D6ES	1 1/2"		2.2 lb
EL28D6GV	1 1/2"		2.2 lb
EL43TD6ES	2.13"	1"	5.39 lb
EL43TD6GV	2.13"	1"	5.39 lb
EL57TD6ES	2 3/4"	1"	10.49 lb
EL57TD6GV	2 3/4"	1"	10.49 lb
EL32D6ES	1.56"		2.6 lb
EL32D6GV	1.56"		2.6 lb
EL36D6ES	1.69"		3.3 lb
EL36D6GV	1.69"		3.3 lb
EL36D6MG	1.69"		3.3 lb

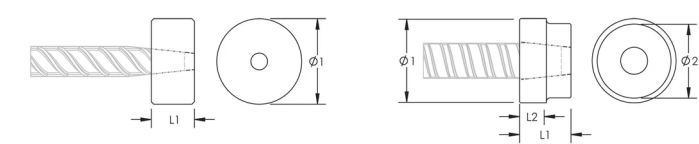
**Designed to Meet:** ACI 318;AS3600;ASTM A970

## ADDITIONAL PRODUCT DETAILS

Bar dimensions and weights listed may vary by region. Coupler sizes not shown may be available by special order. Contact your nVent LENTON representative for more information.

Thread does not need to be flush with end of nVent LENTON Terminator. Thread may be +/- 2 threads from backside of coupler.

DIAGRAMS



WARNING

nVent products shall be installed and used only as indicated in nVent's product instruction sheets and training materials. Instruction sheets are available at [www.nvent.com](http://www.nvent.com) and from your nVent customer service representative. Improper installation, misuse, misapplication or other failure to completely follow nVent's instructions and warnings may cause product malfunction, property damage, serious bodily injury and death and/or void your warranty.

North America

+1.800.753.9221  
Option 1 – Customer Care  
Option 2 – Technical  
Support

Europe

Netherlands:  
+31 800-0200135  
France:  
+33 800 901 793

Europe

Germany:  
800 1890272  
Other Countries:  
+31 13 5835404

APAC

Shanghai:  
+ 86 21 2412 1618/19  
Sydney:  
+61 2 9751 8500



Our powerful portfolio of brands:

CADDY   ERICO   HOFFMAN   ILSCO   SCHROFF   TRACHTE