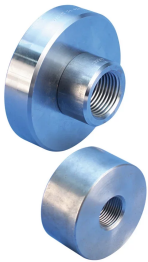


D14 Mechanical Anchor for Cryogenic Applications



The nVent LENTON brand of cryogenic reinforcement splicing systems should be specified whenever cryogenic-grade reinforcing bar is used, or during normal operating or emergency conditions where the temperature falls below -20 °C (-4 °F). By combining the nVent LENTON taper-threaded couplers with state-of-the-art materials, we have developed one of the slimmest couplers on the market, while still maintaining top performance. Typical construction projects include LNG and LPG storage tanks.

FEATURES

Replaces conventional hooked reinforcing bar

Simplifies reinforcing bar placement and lowers placing costs

Head area exceeds 10x bar area (net 9x)

Improved performance and reliability at cryogenic temperatures (-168 °C / -270 °F)

SPECIFICATIONS

Finish: Plain

Material: Stainless Steel 431 (EN 1.4057)

Table 1/2

Catalog Number	Rebar Size, US	Rebar Size, Canada	Diameter 1 (Ø1)	Diameter 2 (Ø2)	Length 1 (L1)	Length 2 (L2)
EL12D14CRN	#4	10M	1.77"		0.73"	
EL16D14CRN	#5	15M	2.17"		0.94"	
EL28D14CRN	#9	30M	3.74"	3.15"	1.65"	0.79"
EL20D14CRN	#6	20M	2.56"		1.38"	

CatalogNumber	Rebar Size, US	Rebar Size, Canada	Diameter 1(Ø1)	Diameter 2(Ø2)	Length 1 (L1)	Length 2 (L2)
EL32D14CRN	#10		4.13"	3.15"	1.79"	0.98"
EL25D14CRN	#8	25M	3.15"		1.57"	

Table 2/2

Catalog Number	Unit Weight
EL12D14CRN	0.5 lb
EL16D14CRN	1 lb
EL28D14CRN	4.6 lb
EL20D14CRN	1.8 lb
EL32D14CRN	5.1 lb
EL25D14CRN	3.5 lb

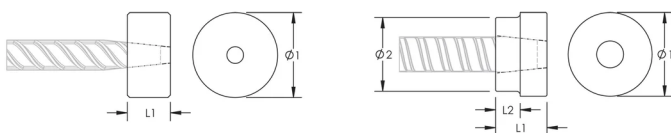
Designed to Meet: ACI 318;AS3600;ASTM A970;EN 14620-3

ADDITIONAL PRODUCT DETAILS

Bar dimensions and weights listed may vary by region. Coupler sizes not shown may be available by special order. Contact your nVent LENTON representative for more information.

Thread does not need to be flush with end of nVent LENTON Terminator. Thread may be +/- 2 threads from backside of coupler.

DIAGRAMS



WARNING

nVent products shall be installed and used only as indicated in nVent's product instruction sheets and training materials. Instruction sheets are available at www.nvent.com and from your nVent customer service representative. Improper

installation, misuse, misapplication or other failure to completely follow nVent's instructions and warnings may cause product malfunction, property damage, serious bodily injury and death and/or void your warranty.

North America

+1.800.753.9221
Option 1 – Customer Care
Option 2 – Technical
Support

Europe

Netherlands:
+31 800-0200135
France:
+33 800 901 793

Europe

Germany:
800 1890272
Other Countries:
+31 13 5835404

APAC

Shanghai:
+ 86 21 2412 1618/19
Sydney:
+61 2 9751 8500



Our powerful portfolio of brands:

CADDY ERICO HOFFMAN ILSCO SCHROFF TRACHTE