

# CPPSW Tapered Plastic Screw-In Plug with Steel Cap for A2



## FEATURES

Designed for use with the A2 coupler families

Designed to keep dirt, water and concrete slurry out of the coupler during the concrete pour

Steel cap provides added protection from damage

Color coded for the appropriate coupler size

## SPECIFICATIONS

**Material:** High Density Polyethylene (HDPE)

Table 1/2

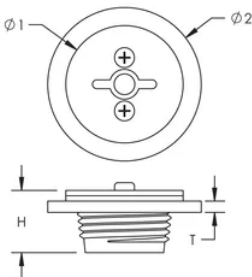
Catalog Number	Rebar Size, US	Rebar Size, Canada	Diameter 1 (Ø1)	Diameter 2 (Ø2)	Height (H)	Thickness (T)
EL12CPPSW	#4	10M	0.98"	1 1/4"	0.59"	0.13"
EL16CPPSW	#5	15M	1.18"	1.41"	0.59"	0.13"
EL20CPPSW	#6	20M	1.38"	1.62"	0.59"	0.13"
EL22CPPSW	#7		1.58"	1.7"	0.71"	0.13"

CatalogNumber	Rebar Size, US	Rebar Size, Canada	Diameter 1(Ø1)	Diameter 2(Ø2)	Height (H)	Thickness (T)
EL25CPPSW	#8	25M	1.77"	1.82"	0.71"	0.13"
EL28CPPSW	#9	30M	1.97"	1.95"	0.71"	0.13"
EL32CPPSW	#10		2.36"	2.11"	0.71"	0.13"

Table 2/2

Catalog Number	Color
EL12CPPSW	Red
EL16CPPSW	Black
EL20CPPSW	Yellow
EL22CPPSW	Blue
EL25CPPSW	Red
EL28CPPSW	Black
EL32CPPSW	Yellow

## DIAGRAMS



## WARNING

nVent products shall be installed and used only as indicated in nVent's product instruction sheets and training materials. Instruction sheets are available at [www.nvent.com](http://www.nvent.com) and from your nVent customer service representative. Improper installation, misuse, misapplication or other failure to completely follow nVent's instructions and warnings may cause product malfunction, property damage, serious bodily injury and death and/or void your warranty.

#### North America

+1.800.753.9221

Option 1 – Customer Care

Option 2 – Technical

Support

#### Europe

Netherlands:

+31 800-0200135

France:

+33 800 901 793

#### Europe

Germany:

800 1890272

Other Countries:

+31 13 5835404

#### APAC

Shanghai:

+ 86 21 2412 1618/19

Sydney:

+61 2 9751 8500



Our powerful portfolio of brands:

**CADDY**

**ERICO**

**HOFFMAN**

**ILSCO**

**SCHROFF**

**TRACHTE**