

# CIPS Tapered Plastic Push-In Plug for A2



## FEATURES

Designed for use with the A2 coupler families

Designed to keep dirt and water out of the coupler during transportation and installation

Color coded for the appropriate coupler size

## SPECIFICATIONS

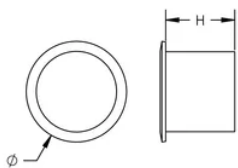
**Material:** Polyethylene

Table 1/1

Catalog Number	Rebar Size, US	Rebar Size, Canada	Diameter (Ø)	Height (H)	Color
EL10CIPS	#3		0.59"	0.28"	Yellow
EL12CIPS	#4	10M	0.64"	0.28"	Red
EL14CIPS			0.73"	0.28"	Green
EL16CIPS	#5	15M	0.82"	0.28"	Black
EL18CIPS			0.88"	0.28"	White
EL20CIPS	#6	20M	1.01"	0.34"	Yellow

Catalog Number	Rebar Size, US	Rebar Size, Canada	Diameter (Ø)	Height (H)	Color
EL22CIPS	#7		1.1"	0.34"	Blue
EL25CIPS	#8	25M	1.23"	0.34"	Red
EL28CIPS	#9	30M	1.36"	0.34"	Black
EL32CIPS	#10		1.52"	0.38"	Yellow
EL36CIPS	#11	35M	1.65"	0.38"	Blue
EL38CIPS	#12		1.73"	0.38"	White
EL40CIPS			1.88"	0.38"	Green
EL43TCIPS	#14	45M	2.05"	0.44"	Red
EL50TCIPS			2.43"	0.44"	Black
EL57TCIPS	#18	55M	2.61"	0.44"	Blue

## DIAGRAMS



## WARNING

nVent products shall be installed and used only as indicated in nVent's product instruction sheets and training materials. Instruction sheets are available at [www.nvent.com](http://www.nvent.com) and from your nVent customer service representative. Improper installation, misuse, misapplication or other failure to completely follow nVent's instructions and warnings may cause product malfunction, property damage, serious bodily injury and death and/or void your warranty.

#### North America

+1.800.753.9221

Option 1 – Customer Care

Option 2 – Technical

Support

#### Europe

Netherlands:

+31 800-0200135

France:

+33 800 901 793

#### Europe

Germany:

800 1890272

Other Countries:

+31 13 5835404

#### APAC

Shanghai:

+ 86 21 2412 1618/19

Sydney:

+61 2 9751 8500



Our powerful portfolio of brands:

**CADDY**

**ERICO**

**HOFFMAN**

**ILSCO**

**SCHROFF**

**TRACHTE**