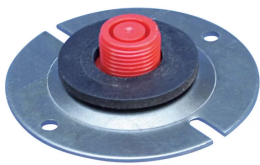


CFFW Tapered Screw-In Plug for A2 Couplers



FEATURES

Designed for use with the A2 coupler families

Designed to keep dirt, water and concrete slurry out of the coupler during the concrete pour

Durable mounting plates allow for easy attachment to forms

Color coded for the appropriate coupler size

SPECIFICATIONS

Table 1/2

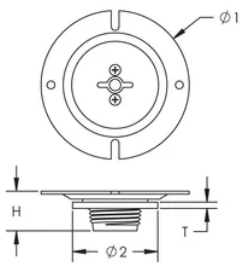
Catalog Number	Rebar Size, US	Rebar Size, Canada	Diameter 1 (Ø1)	Diameter 2 (Ø2)	Height (H)	Thickness (T)
EL22CFFW	#7		2.95"	1.7"	0.69"	0.13"
EL25CFFW	#8	25M	2.95"	1.82"	0.69"	0.13"
EL28CFFW	#9	30M	2.95"	1.95"	0.69"	0.13"
EL32CFFW	#10		3.74"	2.11"	0.69"	0.13"

Table 2/2

Catalog Number	Color
EL22CFFW	Blue

Catalog Number	Color
EL25CFFW	Red
EL28CFFW	Black
EL32CFFW	Yellow

DIAGRAMS



WARNING

nVent products shall be installed and used only as indicated in nVent's product instruction sheets and training materials. Instruction sheets are available at www.nvent.com and from your nVent customer service representative. Improper installation, misuse, misapplication or other failure to completely follow nVent's instructions and warnings may cause product malfunction, property damage, serious bodily injury and death and/or void your warranty.

North America

+1.800.753.9221
Option 1 – Customer Care
Option 2 – Technical
Support

Europe

Netherlands:
+31 800-0200135
France:
+33 800 901 793

Europe

Germany:
800 1890272
Other Countries:
+31 13 5835404

APAC

Shanghai:
+ 86 21 2412 1618/19
Sydney:
+61 2 9751 8500



Our powerful portfolio of brands:

CADDY ERICO HOFFMAN ILSCO SCHROFF TRACHTE