

# B-Series Vertical Sleeve



The B-Series Vertical Sleeve is designed to be welded perpendicularly to common grades of structural plates and shapes. Typical applications include welding to base plates, anchor plates and for tying together structural steel members.

## FEATURES

Designed to connect vertical reinforcing bars and angular reinforcing bars greater than 45 degrees

Machined from weldable grades of steel

Works with saw cut, flame cut and sheared bars

Can be visually inspected after installation

Available with extended sleeve lengths

## SPECIFICATIONS

<b>Finish:</b>	Plain
<b>Sleeve:</b>	Standard Length
<b>Material:</b>	Steel
<b>100% U.S. Domestic Content:</b>	Yes

Table 1/2

Catalog Number	Rebar Size, US	Rebar Size, Canada	Diameter 1 (Ø1)	Diameter 2 (Ø2)	Length 1 (L1)	Length 2 (L2)
RBB592JA	#5	15M	1.38"	0.88"	5"	2 1/2"
RBB692JA	#6	20M	1 1/2"	1"	5"	2 1/2"
RBB792JA	#7		1.63"	1.13"	5"	2 1/2"

CatalogNumber	Rebar Size, US	Rebar Size, Canada	Diameter 1(Ø1)	Diameter 2(Ø2)	Length 1 (L1)	Length 2 (L2)
RBB8101JA	#8	25M	1.88"	1 1/4"	5"	2 1/2"
RBB992JA	#9	30M	2.13"	1 1/2"	5"	2 1/2"
RBB1092JA	#10		2 1/4"	1.63"	5"	2 1/2"
RBB11101JA	#11	35M	2 1/2"	1 3/4"	6"	3"
RBB1292JA	#12		2 3/4"	1.88"	6"	2 1/2"
RBB14101JA	#14	45M	3"	2.13"	6"	2 1/2"
RBB1892JA	#18	55M	3 3/4"	2.63"	7"	2 1/2"

Table 2/2

Catalog Number	Unit Weight
RBB592JA	1.2 lb
RBB692JA	1.4 lb
RBB792JA	1.5 lb
RBB8101JA	2.2 lb
RBB992JA	2.5 lb
RBB1092JA	2.7 lb
RBB11101JA	4.2 lb
RBB1292JA	5 lb
RBB14101JA	6 lb
RBB1892JA	11.1 lb

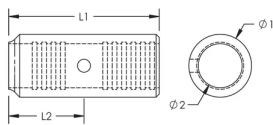
**Designed to Meet:** AASHTO;ABNT NBR 8548:1984;ACI 318 Type 1 (125% Specified Yield);ACI 318 Type 2 (Specified Tensile);ACI 349;ACI 359;AS3600

ADDITIONAL PRODUCT DETAILS

Prior to installation, please read and understand all of the detailed instructions and safety notices provided in the nVent LENTON Cadweld Rebar Splicing System Instruction Manual.

Sizes not shown may be available by special order. Contact your nVent LENTON representative for more information.

DIAGRAMS



WARNING

nVent products shall be installed and used only as indicated in nVent's product instruction sheets and training materials. Instruction sheets are available at [www.nvent.com](http://www.nvent.com) and from your nVent customer service representative. Improper installation, misuse, misapplication or other failure to completely follow nVent's instructions and warnings may cause product malfunction, property damage, serious bodily injury and death and/or void your warranty.

North America

+1.800.753.9221  
Option 1 – Customer Care  
Option 2 – Technical  
Support

Europe

Netherlands:  
+31 800-0200135  
France:  
+33 800 901 793

Europe

Germany:  
800 1890272  
Other Countries:  
+31 13 5835404

APAC

Shanghai:  
+ 86 21 2412 1618/19  
Sydney:  
+61 2 9751 8500



Our powerful portfolio of brands:

CADDY   ERICO   HOFFMAN   ILSCO   SCHROFF   TRACHTE