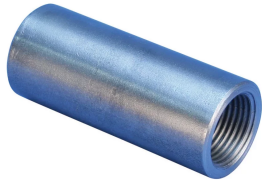


A22 Standard Coupler, High Strength, Plain



The A22 family of standard couplers is designed for use on ASTM A615 grade 100 (700MPa) reinforcing steel. The performance of the spliced connection is designed to meet the bars' specified ultimate tensile strength of 115ksi (792MPa).

FEATURES

Designed to splice the same diameter bars where one bar can be rotated and the bar is not restricted in its axial direction

Slim design reduces concrete cover

Installs quickly and easily

SPECIFICATIONS

Finish: Plain

Material: Steel

100% U.S. Domestic Content: Yes

Table 1/2

Catalog Number	Rebar Size, US	Rebar Size, Canada	Diameter (Ø)	Length (L)	Bar Depth (BD)	Bar Gap (BG)
EL22A22	#7		1.25"	3.6"	1.46"	0.68"
EL25A22	#8	25M	1.5"	3.8"	1.57"	0.66"
EL28A22	#9	30M	1.75"	3.97"	1.65"	0.67"
EL32A22	#10		1.88"	4.23"	1.78"	0.67"
EL36A22	#11	35M	2.25"	4.76"	2.04"	0.68"

CatalogNumber	Rebar Size, US	Rebar Size, Canada	Diameter (Ø)	Length (L)	Bar Depth (BD)	Bar Gap (BG)
EL57TA22	#18	55M	3.25"	7.57"	3.28"	1.01"
EL43TA22	#14	45M	2.5"	6.22"	2.6"	1.02"

Table 2/2

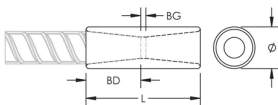
Catalog Number	Unit Weight
EL22A22	0.8 lb
EL25A22	1.2 lb
EL28A22	1.8 lb
EL32A22	2.1 lb
EL36A22	3.6 lb
EL57TA22	10.8 lb
EL43TA22	5.4 lb

Designed to Meet: AASHTO;ABNT NBR 8548:1984;ACI 318 Type 1 (125% Specified Yield);ACI 318 Type 2 (Specified Tensile);ACI 349;ACI 359;AS3600

ADDITIONAL PRODUCT DETAILS

Bar dimensions and weights listed may vary by region. Coupler sizes not shown may be available by special order. Contact your nVent LENTON representative for more information.

DIAGRAMS



WARNING

nVent products shall be installed and used only as indicated in nVent's product instruction sheets and training materials. Instruction sheets are available at www.nvent.com and from your nVent customer service representative. Improper installation, misuse, misapplication or other failure to completely follow nVent's instructions and warnings may cause product malfunction, property damage, serious bodily injury and death and/or void your warranty.

North America

+1.800.753.9221
Option 1 – Customer Care
Option 2 – Technical
Support

Europe

Netherlands:
+31 800-0200135
France:
+33 800 901 793

Europe

Germany:
800 1890272
Other Countries:
+31 13 5835404

APAC

Shanghai:
+ 86 21 2412 1618/19
Sydney:
+61 2 9751 8500



Our powerful portfolio of brands:

CADDY ERICO HOFFMAN ILSCO SCHROFF TRACHTE