

A2 Standard Transition Coupler for Nuclear Applications



The nuclear industry demands scrutiny throughout the entire product life-cycle. nVent LENTON products produced under nVent's nuclear quality systems receive the utmost attention to detail and can meet the high demands of the nuclear industry. These quality systems are designed to include compliance to ASME NCA-3800 (ERICO - QSC 595), NQA-1, 10CFR50 Appendix B, 10CFR 50.55(e), 10CFR Part 21 and USNRC Regulatory Guide 1.28. nVent LENTON products produced for nuclear applications are assigned unique part numbers to ensure detailed product documentation and full product traceability in accordance with demanding industry expectations.

CERTIFICATIONS



FEATURES

Designed to splice different diameter bars where the second bar can be rotated and is not restricted in its axial direction

Slim design maintains concrete cover

Installs quickly and easily

SPECIFICATIONS

Finish:	Plain
Material:	Steel
100% U.S. Domestic Content:	Yes

Table 1/2

Catalog Number	Rebar Size, US	Rebar Size, Canada	Hex Width (W)	Diameter (Ø)	Length (L)	Bar Depth 1 (BD1)
EL2216A2Q	#7, #5		1.19"		3.09"	1.26"

CatalogNumber	Rebar Size, US	Rebar Size, Canada	Hex Width (W)	Diameter (Ø)	Length (L)	Bar Depth 1 (BD1)
EL2016A2Q	#6, #5	20M, 15M	1.06"		3"	1.09"
EL2522A2Q	#8, #7			1.38"	3.69"	1.36"

Table 2/2

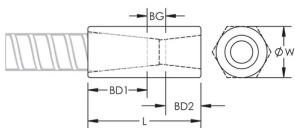
Catalog Number	Bar Depth 2 (BD2)	Bar Gap (BG)	Unit Weight	Certifications
EL2216A2Q	0.86"	0.97"	0.8 lb	
EL2016A2Q	0.86"	1.05"	0.9 lb	IAPMO®-UES, LA City Approval
EL2522A2Q	1.26"	1.07"	0.9 lb	IAPMO®-UES, LA City Approval

Designed to Meet: AASHTO;ABNT NBR 8548:1984;ACI 318 Type 1 (125% Specified Yield);ACI 318 Type 2 (Specified Tensile);ACI 349;ACI 359;AS3600

ADDITIONAL PRODUCT DETAILS

Bar dimensions and weights listed may vary by region. Coupler sizes not shown may be available by special order. Contact your nVent LENTON representative for more information.

DIAGRAMS



WARNING

nVent products shall be installed and used only as indicated in nVent's product instruction sheets and training materials. Instruction sheets are available at www.nvent.com and from your nVent customer service representative. Improper installation, misuse, misapplication or other failure to completely follow nVent's instructions and warnings may cause product malfunction, property damage, serious bodily injury and death and/or void your warranty.

North America

+1.800.753.9221

Option 1 – Customer Care

Option 2 – Technical

Support

Europe

Netherlands:

+31 800-0200135

France:

+33 800 901 793

Europe

Germany:

800 1890272

Other Countries:

+31 13 5835404

APAC

Shanghai:

+ 86 21 2412 1618/19

Sydney:

+61 2 9751 8500



Our powerful portfolio of brands:

CADDY

ERICO

HOFFMAN

ILSCO

SCHROFF

TRACHTE