

# A2 Standard Coupler for Nuclear Applications



The nuclear industry demands scrutiny throughout the entire product life-cycle. nVent LENTON products produced under nVent's nuclear quality systems receive the utmost attention to detail and can meet the high demands of the nuclear industry. These quality systems are designed to include compliance to ASME NCA-3800 (ERICO - QSC 595), NQA-1, 10CFR50 Appendix B, 10CFR 50.55(e), 10CFR Part 21 and USNRC Regulatory Guide 1.28. nVent LENTON products produced for nuclear applications are assigned unique part numbers to ensure detailed product documentation and full product traceability in accordance with demanding industry expectations.

## CERTIFICATIONS



## FEATURES

Designed to splice the same diameter bars where the second bar can be rotated and is not restricted in its axial direction

Slim design maintains concrete cover

Installs quickly and easily

## SPECIFICATIONS

**Finish:** Plain

**Material:** Steel

**100% U.S. Domestic Content:** Yes

Table 1/2

Catalog Number	Rebar Size, US	Rebar Size, Canada	Hex Width (W)	Diameter (Ø)	Length (L)	Bar Depth (BD)
EL12A2Q	#4	10M	0.69"		1.63"	0.58"
EL16A2Q	#5	15M	0.88"		2.19"	0.86"

CatalogNumber	Rebar Size, US	Rebar Size, Canada	Hex Width (W)	Diameter (Ø)	Length (L)	Bar Depth (BD)
EL20A2Q	#6	20M	1.06"		2.81"	1.09"
EL22A2Q	#7		1.19"		3.16"	1.26"
EL25A2Q	#8	25M		1.38"	3.34"	1.36"
EL28A2Q	#9	30M		1 1/2"	3.59"	1.49"
EL36A2Q	#11	35M		1.88"	3.97"	1.68"
EL32A2Q	#10			1 3/4"	3.78"	1.58"
EL43TA2Q	#14	45M		2 1/4"	5 1/4"	2.2"
EL57TA2Q	#18	55M		3"	6.47"	2.81"

Table 2/2		
Catalog Number	Bar Gap (BG)	Unit Weight
EL12A2Q	0.47"	0.1 lb
EL16A2Q	0.47"	0.3 lb
EL20A2Q	0.63"	0.5 lb
EL22A2Q	0.64"	0.7 lb
EL25A2Q	0.62"	0.9 lb
EL28A2Q	0.61"	1 lb
EL36A2Q	0.61"	1.8 lb
EL32A2Q	0.62"	1.5 lb
EL43TA2Q	0.85"	3.4 lb

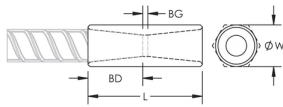
Catalog Number	Bar Gap (BG)	Unit Weight
EL57TA2Q	0.85"	7.3 lb

**Designed to Meet:** AASHTO;ABNT NBR 8548:1984;ACI 318 Type 1 (125% Specified Yield);ACI 318 Type 2 (Specified Tensile);ACI 349;ACI 359;AS3600

## ADDITIONAL PRODUCT DETAILS

Bar dimensions and weights listed may vary by region. Coupler sizes not shown may be available by special order. Contact your nVent LENTON representative for more information.

## DIAGRAMS



## WARNING

nVent products shall be installed and used only as indicated in nVent's product instruction sheets and training materials. Instruction sheets are available at [www.nvent.com](http://www.nvent.com) and from your nVent customer service representative. Improper installation, misuse, misapplication or other failure to completely follow nVent's instructions and warnings may cause product malfunction, property damage, serious bodily injury and death and/or void your warranty.

### North America

+1.800.753.9221  
Option 1 – Customer Care  
Option 2 – Technical  
Support

### Europe

Netherlands:  
+31 800-0200135  
France:  
+33 800 901 793

### Europe

Germany:  
800 1890272  
Other Countries:  
+31 13 5835404

### APAC

Shanghai:  
+ 86 21 2412 1618/19  
Sydney:  
+61 2 9751 8500



Our powerful portfolio of brands:

**CADDY ERICO HOFFMAN ILSCO SCHROFF TRACHTE**