

A2 Standard Coupler, Coated



Coated reinforcing bar is used in place of plain reinforcing bars to protect against corrosion. Typical applications include bridges, parking structures, pavement, marine structures and repair work. nVent LENTON couplers and mechanical anchors are available in multiple coatings to meet specific job requirements.

CERTIFICATIONS



FEATURES

Designed to splice the same diameter bars where the second bar can be rotated and is not restricted in its axial direction

Slim design maintains concrete cover

Installs quickly and easily

Multiple coatings available

SPECIFICATIONS

Material: Steel

100% U.S. Domestic Content: Yes

Table 1/2

Catalog Number	Finish	Finish Standard	Coupler Protector	Rebar Size, US	Rebar Size, Canada	Hex Width (W)
EL12A2ES	Epoxy Coated	ASTM® A775/A775M and AASHTO M284	Standard	#4	10M	0.69"

CatalogNumber	Finish	Finish Standard	Coupler Protector	Rebar Size, US	Rebar Size, Canada	Hex Width (W)
EL12A2GV	Hot-Dip Galvanized	ASTM® A767 Class I	Standard	#4	10M	0.69"
EL12A2MG	Mechanical Galvanized	ASTM® B695 Class 50 with Clear Trivalent Chromate Seal	Standard	#4	10M	0.69"
EL16A2ES	Epoxy Coated	ASTM® A775/A775M and AASHTO M284	Standard	#5	15M	0.88"
EL16A2GV	Hot-Dip Galvanized	ASTM® A767 Class I	Standard	#5	15M	0.88"
EL16A2MG	Mechanical Galvanized	ASTM® B695 Class 50 with Clear Trivalent Chromate Seal	Standard	#5	15M	0.88"
EL20A2ES	Epoxy Coated	ASTM® A775/A775M and AASHTO M284	Standard	#6	20M	1.06"
EL20A2GV	Hot-Dip Galvanized	ASTM® A767 Class I	Standard	#6	20M	1.06"
EL20A2MG	Mechanical Galvanized	ASTM® B695 Class 50 with Clear Trivalent Chromate Seal	Standard	#6	20M	1.06"
EL22A2ES	Epoxy Coated	ASTM® A775/A775M and AASHTO M284	Standard	#7		1.19"
EL22A2GV	Hot-Dip Galvanized	ASTM® A767 Class I	Standard	#7		1.19"
EL22A2MG	Mechanical Galvanized	ASTM® B695 Class 50 with Clear Trivalent Chromate Seal	Standard	#7		1.19"
EL22A2MGWIC P	Mechanical Galvanized	ASTM® B695 Class 50 with Clear Trivalent Chromate Seal	Internal Plastic Form Saver Plug (ELICP)	#7		1.19"

CatalogNumber	Finish	Finish Standard	Coupler Protector	Rebar Size, US	Rebar Size, Canada	Hex Width (W)
EL25A2ES	Epoxy Coated	ASTM® A775/A775M and AASHTO M284	Standard	#8	25M	
EL25A2GV	Hot-Dip Galvanized	ASTM® A767 Class I	Standard	#8	25M	
EL25A2MG	Mechanical Galvanized	ASTM® B695 Class 50 with Clear Trivalent Chromate Seal	Standard	#8	25M	
EL25A2MGWICP	Mechanical Galvanized	ASTM® B695 Class 50 with Clear Trivalent Chromate Seal	Internal Plastic Form Saver Plug (ELICP)	#8	25M	
EL28A2EG	Electrogalvanized	ASTM® B633 per SC 3	Standard	#9	30M	
EL28A2ES	Epoxy Coated	ASTM® A775/A775M and AASHTO M284	Standard	#9	30M	
EL28A2GV	Hot-Dip Galvanized	ASTM® A767 Class I	Standard	#9	30M	
EL28A2MG	Mechanical Galvanized	ASTM® B695 Class 50 with Clear Trivalent Chromate Seal	Standard	#9	30M	
EL28A2MGWICP	Mechanical Galvanized	ASTM® B695 Class 50 with Clear Trivalent Chromate Seal	Internal Plastic Form Saver Plug (ELICP)	#9	30M	
EL36A2EG	Electrogalvanized	ASTM® B633 per SC 3	Standard	#11	35M	
EL36A2ES	Epoxy Coated	ASTM® A775/A775M and AASHTO M284	Standard	#11	35M	
EL36A2ESWICP	Epoxy Coated	ASTM® A775/A775M and AASHTO M284	Internal Plastic Form Saver Plug (ELICP)	#11	35M	
EL36A2GV	Hot-Dip Galvanized	ASTM® A767 Class I	Standard	#11	35M	

CatalogNumber	Finish	Finish Standard	Coupler Protector	Rebar Size, US	Rebar Size, Canada	Hex Width (W)
EL36A2MG	Mechanical Galvanized	ASTM® B695 Class 50 with Clear Trivalent Chromate Seal	Standard	#11	35M	
EL32A2ES	Epoxy Coated	ASTM® A775/A775M and AASHTO M284	Standard	#10		
EL32A2GV	Hot-Dip Galvanized	ASTM® A767 Class I	Standard	#10		
EL32A2MG	Mechanical Galvanized	ASTM® B695 Class 50 with Clear Trivalent Chromate Seal	Standard	#10		
EL32A2MGWICP	Mechanical Galvanized	ASTM® B695 Class 50 with Clear Trivalent Chromate Seal	Internal Plastic Form Saver Plug (ELICP)	#10		
EL43TA2ES	Epoxy Coated	ASTM® A775/A775M and AASHTO M284	Standard	#14	45M	
EL43TA2GV	Hot-Dip Galvanized	ASTM® A767 Class I	Standard	#14	45M	
EL43TA2MG	Mechanical Galvanized	ASTM® B695 Class 50 with Clear Trivalent Chromate Seal	Standard	#14	45M	
EL50TA2ES	Epoxy Coated	ASTM® A775/A775M and AASHTO M284	Standard			
EL57TA2ES	Epoxy Coated	ASTM® A775/A775M and AASHTO M284	Standard	#18	55M	
EL57TA2GV	Hot-Dip Galvanized	ASTM® A767 Class I	Standard	#18	55M	
EL57TA2MG	Mechanical Galvanized	ASTM® B695 Class 50 with Clear Trivalent Chromate Seal	Standard	#18	55M	

Table 2/2

Catalog Number	Diameter (Ø)	Length (L)	Bar Depth (BD)	Bar Gap (BG)	Unit Weight
EL12A2ES		1.63"	0.58"	0.47"	0.1 lb
EL12A2GV		1.63"	0.58"	0.47"	0.1 lb
EL12A2MG		1.63"	0.58"	0.47"	0.1 lb
EL16A2ES		2.19"	0.86"	0.47"	0.3 lb
EL16A2GV		2.19"	0.86"	0.47"	0.3 lb
EL16A2MG		2.19"	0.86"	0.47"	0.3 lb
EL20A2ES		2.81"	1.09"	0.63"	0.5 lb
EL20A2GV		2.81"	1.09"	0.63"	0.5 lb
EL20A2MG		2.81"	1.09"	0.63"	0.5 lb
EL22A2ES		3.16"	1.26"	0.64"	0.7 lb
EL22A2GV		3.16"	1.26"	0.64"	0.7 lb
EL22A2MG		3.16"	1.26"	0.64"	0.7 lb
EL22A2MGWICP		3.16"	1.26"	0.64"	0.7 lb
EL25A2ES	1.38"	3.34"	1.36"	0.62"	0.9 lb
EL25A2GV	1.38"	3.34"	1.36"	0.62"	0.9 lb
EL25A2MG	1.38"	3.34"	1.36"	0.62"	0.9 lb
EL25A2MGWICP	1.38"	3.34"	1.36"	0.62"	0.9 lb
EL28A2EG	1 1/2"	3.59"	1.49"	0.61"	1 lb

Catalog Number	Diameter (Ø)	Length (L)	Bar Depth (BD)	Bar Gap (BG)	Unit Weight
EL28A2ES	1 1/2"	3.59"	1.49"	0.61"	1 lb
EL28A2GV	1 1/2"	3.59"	1.49"	0.61"	1 lb
EL28A2MG	1 1/2"	3.59"	1.49"	0.61"	1 lb
EL28A2MGWICP	1 1/2"	3.59"	1.49"	0.61"	1 lb
EL36A2EG	1.88"	3.97"	1.68"	0.61"	1.8 lb
EL36A2ES	1.88"	3.97"	1.68"	0.61"	1.8 lb
EL36A2ESWICP	1.88"	3.97"	1.68"	0.61"	1.8 lb
EL36A2GV	1.88"	3.97"	1.68"	0.61"	1.8 lb
EL36A2MG	1.88"	3.97"	1.68"	0.61"	1.8 lb
EL32A2ES	1 3/4"	3.78"	1.58"	0.62"	1.5 lb
EL32A2GV	1 3/4"	3.78"	1.58"	0.62"	1.5 lb
EL32A2MG	1 3/4"	3.78"	1.58"	0.62"	1.5 lb
EL32A2MGWICP	1 3/4"	3.78"	1.58"	0.62"	1.5 lb
EL43TA2ES	2 1/4"	5 1/4"	2.2"	0.85"	3.4 lb
EL43TA2GV	2 1/4"	5 1/4"	2.2"	0.85"	3.4 lb
EL43TA2MG	2 1/4"	5 1/4"	2.2"	0.85"	3.4 lb
EL50TA2ES	2 3/4"	6.41"	2.78"	0.85"	6.2 lb
EL57TA2ES	3"	6.47"	2.81"	0.85"	7.3 lb

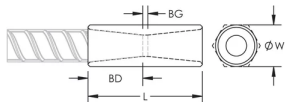
Catalog Number	Diameter (Ø)	Length (L)	Bar Depth (BD)	Bar Gap (BG)	Unit Weight
EL57TA2GV	3"	6.47"	2.81"	0.85"	7.3 lb
EL57TA2MG	3"	6.47"	2.81"	0.85"	7.3 lb

Designed to Meet: AASHTO;ABNT NBR 8548:1984;ACI 318 Type 1 (125% Specified Yield);ACI 318 Type 2 (Specified Tensile);ACI 349;ACI 359;AS3600

ADDITIONAL PRODUCT DETAILS

Bar dimensions and weights listed may vary by region. Coupler sizes not shown may be available by special order. Contact your nVent LENTON representative for more information.

DIAGRAMS



WARNING

nVent products shall be installed and used only as indicated in nVent's product instruction sheets and training materials. Instruction sheets are available at www.nvent.com and from your nVent customer service representative. Improper installation, misuse, misapplication or other failure to completely follow nVent's instructions and warnings may cause product malfunction, property damage, serious bodily injury and death and/or void your warranty.

North America

+1.800.753.9221
Option 1 – Customer Care
Option 2 – Technical
Support

Europe

Netherlands:
+31 800-0200135
France:
+33 800 901 793

Europe

Germany:
800 1890272
Other Countries:
+31 13 5835404

APAC

Shanghai:
+ 86 21 2412 1618/19
Sydney:
+61 2 9751 8500



Our powerful portfolio of brands:

CADDY ERICO HOFFMAN ILSCO SCHROFF TRACHTE