

# A12 Standard Transition Coupler, Plain, Worldwide Design



## CERTIFICATIONS



## FEATURES

Designed to splice different diameter bars where the second bar can be rotated and is not restricted in its axial direction

Slim design maintains concrete cover

Installs quickly and easily

## SPECIFICATIONS

<b>Finish:</b>	Plain
<b>Material:</b>	Steel
<b>Design Version:</b>	Worldwide (Globally Available Materials)
<b>100% U.S. Domestic Content:</b>	Yes

Table 1/2

Catalog Number	Rebar Size, US	Rebar Size, Canada	Hex Width (W)	Diameter (Ø)	Length (L)	Bar Depth 1 (BD1)
EL1210A12	#4, #3		0.67"		2.15"	0.73"

CatalogNumber	Rebar Size, US	Rebar Size, Canada	Hex Width (W)	Diameter (Ø)	Length (L)	Bar Depth 1 (BD1)
EL1612A12	#5, #4	15M, 10M	0.87"		2.4"	0.96"
EL1614A12			0.87"		2.5"	0.96"
EL2016A12	#6, #5	20M, 15M	1.06"		3.15"	1.37"
EL2220A12	#7, #6		1.18"		3.74"	1.46"
EL2522A12	#8, #7			1.38"	3.94"	1.57"
EL2520A12	#8, #6	25M, 20M		1.38"	3.56"	1.57"
EL2825A12	#9, #8	30M, 25M		1.63"	4.11"	1.65"
EL2820A12	#9, #6	30M, 20M		1.63"	3.96"	1.65"
EL3228A12	#10, #9			1.75"	4.35"	1.78"
EL3632A12	#11, #10			1.88"	4.72"	2.04"
EL3225A12	#10, #8			1.75"	4.29"	1.78"
EL4032A12				2.13"	4.96"	2.25"
EL3622A12	#11, #7			1.88"	4.49"	2.04"
EL43T36A12	#14, #11	45M, 35M		2.25"	5.81"	2.6"
EL50T40A12				2.75"	6.2"	2.76"
EL50T32A12				2.75"	5.77"	2.76"
EL57T36A12	#18, #11	55M, 35M		3"	6.57"	3.28"
EL57T43TA12	#18, #14	55M, 45M		3"	7.26"	3.28"

Table 2/2

Catalog Number	Bar Depth 2 (BD2)	Bar Gap (BG)	Unit Weight	Certifications
EL1210A12	0.71"	0.71"	0.2 lb	
EL1612A12	0.73"	0.71"	0.3 lb	IAPMO®-UES, LA City Approval
EL1614A12	0.84"	0.7"	0.3 lb	
EL2016A12	0.96"	0.82"	0.6 lb	LA City Approval, IAPMO®-UES
EL2220A12	1.37"	0.91"	0.8 lb	IAPMO®-UES, LA City Approval
EL2522A12	1.46"	0.91"	1.1 lb	LA City Approval, IAPMO®-UES
EL2520A12	1.37"	0.62"	1.1 lb	
EL2825A12	1.57"	0.89"	1.5 lb	IAPMO®-UES, LA City Approval
EL2820A12	1.37"	0.94"	1.5 lb	
EL3228A12	1.65"	0.92"	1.9 lb	LA City Approval, IAPMO®-UES
EL3632A12	1.78"	0.9"	2.5 lb	LA City Approval, IAPMO®-UES
EL3225A12	1.57"	0.94"	2 lb	
EL4032A12	1.78"	0.93"	3.3 lb	
EL3622A12	1.46"	0.99"	2.7 lb	
EL43T36A12	2.04"	1.17"	4.6 lb	LA City Approval, IAPMO®-UES
EL50T40A12	2.25"	1.19"	6.8 lb	
EL50T32A12	1.78"	1.23"	6.6 lb	
EL57T36A12	2.04"	1.25"	9.9 lb	LA City Approval, IAPMO®-UES

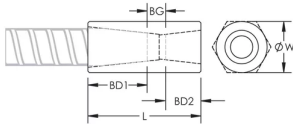
Catalog Number	Bar Depth 2 (BD2)	Bar Gap (BG)	Unit Weight	Certifications
EL57T43TA12	2.6"	1.38"	10.7 lb	LA City Approval, IAPMO®-UES

**Designed to Meet:** AASHTO;ABNT NBR 8548:1984;ACI 318 Type 1 (125% Specified Yield);ACI 318 Type 2 (Specified Tensile);ACI 349;ACI 359;AS3600

## ADDITIONAL PRODUCT DETAILS

Bar dimensions and weights listed may vary by region. Coupler sizes not shown may be available by special order. Contact your nVent LENTON representative for more information.

## DIAGRAMS



## WARNING

nVent products shall be installed and used only as indicated in nVent's product instruction sheets and training materials. Instruction sheets are available at [www.nvent.com](http://www.nvent.com) and from your nVent customer service representative. Improper installation, misuse, misapplication or other failure to completely follow nVent's instructions and warnings may cause product malfunction, property damage, serious bodily injury and death and/or void your warranty.

### North America

+1.800.753.9221  
Option 1 – Customer Care  
Option 2 – Technical  
Support

### Europe

Netherlands:  
+31 800-0200135  
France:  
+33 800 901 793

### Europe

Germany:  
800 1890272  
Other Countries:  
+31 13 5835404

### APAC

Shanghai:  
+ 86 21 2412 1618/19  
Sydney:  
+61 2 9751 8500



Our powerful portfolio of brands:

**CADDY ERICO HOFFMAN ILSCO SCHROFF TRACHTE**