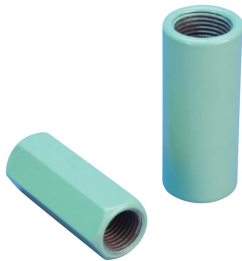


# A12 Standard Transition Coupler, Coated



Coated reinforcing bar is used in place of plain reinforcing bars to protect against corrosion. Typical applications include bridges, parking structures, pavement, marine structures and repair work. nVent LENTON couplers and mechanical anchors are available in multiple coatings to meet specific job requirements.

## CERTIFICATIONS



## FEATURES

Designed to splice different diameter bars where the second bar can be rotated and is not restricted in its axial direction

Slim design maintains concrete cover

Installs quickly and easily

Multiple coatings available

## SPECIFICATIONS

Table 1/3

| Catalog Number | Material | Finish       | Finish Standard                  | 100% U.S. Domestic Content | Design Version                           | Rebar Size, US |
|----------------|----------|--------------|----------------------------------|----------------------------|--|----------------|
| EL57T36A12ES   | Steel    | Epoxy Coated | ASTM® A775/A775M and AASHTO M284 | Yes                        | Worldwide (Globally Available Materials) | #18, #11       |

Table 2/3

| Catalog Number | Rebar Size, Canada | Diameter (Ø) | Length (L) | Bar Depth 1 (BD1) | Bar Depth 2 (BD2) | Bar Gap (BG) |
|----------------|--------------------|--------------|------------|-------------------|-------------------|--------------|
|----------------|--------------------|--------------|------------|-------------------|-------------------|--------------|

|              |          |    |       |       |       |        |
|--------------|----------|----|-------|-------|-------|--------|
| EL57T36A12ES | 55M, 35M | 3" | 6.57" | 3.28" | 2.04" | 1 1/4" |
|--------------|----------|----|-------|-------|-------|--------|

Table 3/3

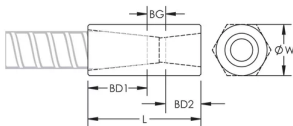
| Catalog Number | Unit Weight |
|----------------|-------------|
| EL57T36A12ES   | 9.9 lb      |

**Designed to Meet:** AASHTO;ABNT NBR 8548:1984;ACI 318 Type 1 (125% Specified Yield);ACI 318 Type 2 (Specified Tensile);ACI 349;ACI 359;AS3600

## ADDITIONAL PRODUCT DETAILS

Bar dimensions and weights listed may vary by region. Coupler sizes not shown may be available by special order. Contact your nVent LENTON representative for more information.

## DIAGRAMS



## WARNING

nVent products shall be installed and used only as indicated in nVent's product instruction sheets and training materials. Instruction sheets are available at [www.nvent.com](http://www.nvent.com) and from your nVent customer service representative. Improper installation, misuse, misapplication or other failure to completely follow nVent's instructions and warnings may cause product malfunction, property damage, serious bodily injury and death and/or void your warranty.

### North America

+1.800.753.9221  
Option 1 – Customer Care  
Option 2 – Technical  
Support

### Europe

Netherlands:  
+31 800-0200135  
France:  
+33 800 901 793

### Europe

Germany:  
800 1890272  
Other Countries:  
+31 13 5835404

### APAC

Shanghai:  
+ 86 21 2412 1618/19  
Sydney:  
+61 2 9751 8500



Our powerful portfolio of brands:

**CADDY ERICO HOFFMAN ILSCO SCHROFF TRACHTE**