

A12 Standard Coupler, Coated



Coated reinforcing bar is used in place of plain reinforcing bars to protect against corrosion. Typical applications include bridges, parking structures, pavement, marine structures and repair work. nVent LENTON couplers and mechanical anchors are available in multiple coatings to meet specific job requirements.

CERTIFICATIONS



FEATURES

Designed to splice the same diameter bars where the second bar can be rotated and is not restricted in its axial direction

Slim design maintains concrete cover

Installs quickly and easily

Multiple coatings available

SPECIFICATIONS

Material: Steel

100% U.S. Domestic Content: Yes

Table 1/2

Catalog Number	Finish	Finish Standard	Rebar Size, US	Rebar Size, Canada	Diameter (Ø)	Length (L)
EL36A12ES	Epoxy Coated	ASTM® A775/A775M and AASHTO M284	#11	35M	1.88"	4.76"

CatalogNumber	Finish	Finish Standard	Rebar Size, US	Rebar Size, Canada	Diameter (Ø)	Length (L)
EL36A12MG	Mechanical Galvanized	ASTM® B695 Class 50 with Clear Trivalent Chromate Seal	#11	35M	1.88"	4.76"
EL57TA12ES	Epoxy Coated	ASTM® A775/A775M and AASHTO M284	#18	55M	3"	7.57"

Table 2/2

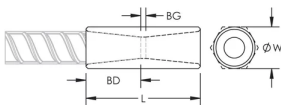
Catalog Number	Bar Depth (BD)	Bar Gap (BG)	Unit Weight
EL36A12ES	2.04"	0.68"	2 lb
EL36A12MG	2.04"	0.68"	2 lb
EL57TA12ES	3.28"	1.01"	8.3 lb

Designed to Meet: AASHTO;ABNT NBR 8548:1984;ACI 318 Type 1 (125% Specified Yield);ACI 318 Type 2 (Specified Tensile);ACI 349;ACI 359;AS3600

ADDITIONAL PRODUCT DETAILS

Bar dimensions and weights listed may vary by region. Coupler sizes not shown may be available by special order. Contact your nVent LENTON representative for more information.

DIAGRAMS



WARNING

nVent products shall be installed and used only as indicated in nVent's product instruction sheets and training materials. Instruction sheets are available at www.nvent.com and from your nVent customer service representative. Improper installation, misuse, misapplication or other failure to completely follow nVent's instructions and warnings may cause product malfunction, property damage, serious bodily injury and death and/or void your warranty.

North America

+1.800.753.9221

Option 1 – Customer Care

Option 2 – Technical

Support

Europe

Netherlands:

+31 800-0200135

France:

+33 800 901 793

Europe

Germany:

800 1890272

Other Countries:

+31 13 5835404

APAC

Shanghai:

+ 86 21 2412 1618/19

Sydney:

+61 2 9751 8500



Our powerful portfolio of brands:

CADDY

ERICO

HOFFMAN

ILSCO

SCHROFF

TRACHTE