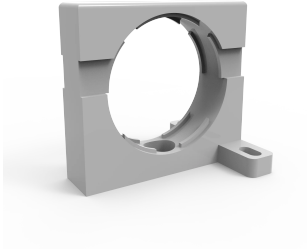


Universal Conduit Holders, CONH



This is a universal holder, for mounting the cable conduit onto the enclosure's frame and the door frame or to an accessory. It is easy to mount and provides a safe and secure fixation.

FEATURES

Description: Universal holder for cable conduit CON. Can be mounted horizontally or vertically on any 25 mm hole pattern of the door frame, enclosure frame or accessory profile.

Material: Polycarbonate.

Pack quantity: 10 pieces.

SPECIFICATIONS

Color: Gray
Material: Polycarbonate
Finish: Smooth

| Table 1/1 | | | | | | |
|----------------|--------|--------|--------|----------|--------------------|----------------|
| Catalog Number | Height | Width | Depth | Diameter | Enclosure Material | Product Family |
| CONH16 | 1.38in | 1.38in | 1.38in | 0.63in | Mild Steel | Free-Standing |
| CONH29 | 1.89in | 2.01in | 1.89in | 1.14in | Mild Steel | Free-Standing |
| CONH36 | 2.17in | 2.4in | 2.4in | 1.41in | Mild Steel | Free-Standing |
| CONH48 | 2.68in | 2.91in | 2.91in | 1.89in | Mild Steel | Free-Standing |

WARNING

nVent products shall be installed and used only as indicated in nVent's product instruction sheets and training materials. Instruction sheets are available at www.nvent.com and from your nVent customer service representative. Improper installation, misuse, misapplication or other failure to completely follow nVent's instructions and warnings may cause product malfunction, property damage, serious bodily injury and death and/or void your warranty.



Our powerful portfolio of brands:

CADDY ERICO HOFFMAN ILSCO SCHROFF TRACHTE