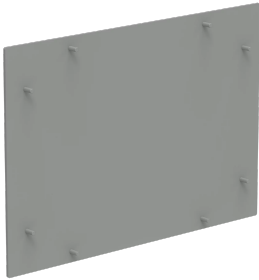


# Replacement Front Plate for Concept HMI Enclosure



Replacement Front Plate that makes it easy to install HMI components and the ability to accommodate cutouts anywhere on the enclosure. Includes mounting instruction and hardware.

## FEATURES

---

Includes mounting instruction and hardware

## SPECIFICATIONS

**Material:** Aluminum  
**Color:** Light Gray  
**Finish:** Powder Coated  
**Color Code:** RAL 7035

Table 1/1

Catalog Number	Article Number	Height	Width	Depth	Thickness	Quick Ship
CPFP2535	16227	9.84in	14.21in	0.13in	0.125in	No
CPFP3040	16228	11.81in	16.18in	0.13in	0.125in	No
CPFP3235	16231	12.8in	14.21in	0.13in	0.125in	No
CPFP3545	16232	13.78in	18.15in	0.13in	0.125in	No
CPFP3740	16233	14.76in	16.18in	0.13in	0.125in	No
CPFP4050	16234	15.75in	20.12in	0.13in	0.125in	No
CPFP4245	16235	16.73in	18.15in	0.13in	0.125in	No
CPFP4555	16236	17.72in	18.15in	0.13in	0.125in	No
CPFP4750	16237	18.7in	20.12in	0.13in	0.125in	No
CPFP4860	16238	18.9in	24.06in	0.13in	0.125in	No
CPFP5255	16241	20.67in	22.09in	0.13in	0.125in	No
CPFP5560	16242	21.85in	24.06in	0.13in	0.125in	No

## WARNING

nVent products shall be installed and used only as indicated in nVent's product instruction sheets and training materials. Instruction sheets are available at [www.nvent.com](http://www.nvent.com) and from your nVent customer service representative. Improper installation, misuse, misapplication or other failure to completely follow nVent's instructions and warnings may cause product malfunction, property damage, serious bodily injury and death and/or void your warranty.



Our powerful portfolio of brands:

**CADDY   ERICO   HOFFMAN   ILSCO   SCHROFF   TRACHTE**