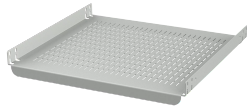


## ProLine G2 Rack-Mount Fixed Shelf



The ProLine G2 Rack Mount Frame Shelf mounts to the front and rear rack angles to provide a stationary surface for equipment.

### FEATURES

---

Mounts to front and rear rack angles, hardware included

14 gauge (1.75 mm) steel shelf, 12 gauge (2.5 mm) steel supports

Slots in shelf surface for ventilation

RAL 7035 textured light gray, polyester powder paint finish

SPECIFICATIONS

**Thickness:** 14ga  
**Color:** Light Gray  
**Finish:** Powder Coated  
**Color Code:** RAL 7035

Table 1/1				
Catalog Number	Article Number	Material	Fits Rack Width	Quick Ship
P2RSH6	35046	Mild Steel	19in	No
P2RSH5	35045	Mild Steel	19in	No
P2RSH4	35044	Mild Steel	19in	No
P2RSH8	35047	Mild Steel	19in	No
P2RSH10	35048	Mild Steel	19in	No

WARNING

nVent products shall be installed and used only as indicated in nVent's product instruction sheets and training materials. Instruction sheets are available at [www.nvent.com](http://www.nvent.com) and from your nVent customer service representative. Improper installation, misuse, misapplication or other failure to completely follow nVent's instructions and warnings may cause product malfunction, property damage, serious bodily injury and death and/or void your warranty.



Our powerful portfolio of brands:

CADDY   ERICO   HOFFMAN   ILSCO   SCHROFF   TRACHTE