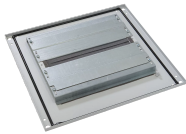


# ProLine G2 Disconnect Gland Plate



ProLine G2 Disconnect Components are used with ProLine G2 Disconnect Frames and Doors to configure a custom Disconnect Enclosure Solution for widths >1000 mm wide. These components are identical to the standard ProLine G2 components (i.e. ProLine G2 Solid Tops, Gland Plates, Mounting Subpanel) with the exception that the center support is offset 100mm (to accommodate the hinged mullion). Gland Plates are finished with paint over plated surfaces.

## FEATURES

Solution for widths >1000 mm wide

Consists of a base mounting surface and adjustable foam gasketed gland plates that permit cable entry

Sturdy, adjustable gland plates designed to bear the weight of a person

Number of plates varies with depth: 400 mm and 500 mm (3 plates); 600 mm (4 plates); 800 mm (6 plates); 1000 mm (8 plates)

Galvanized or painted versions

Sealed to maintain NEMA Type 12 rating

Gland Plates are finished with paint over plated surfaces

Can be used with Plinth Base (100 mm or 200 mm), 100 mm Solid Plinth Base, Mobile Base or Transportation Base

Can be used without a base if casters, levelers or frame feet are installed

Can be rotated 180 degrees for front or rear cable entry

Installation hardware included

Includes additional foam gasketing which can be applied to reposition the gasketed opening towards the center of the cabinet or to create two independent access points

## SPECIFICATIONS

**Thickness:** 14ga  
**Color:** Light Gray  
**Color Code:** RAL 7035

Table 1/1

Catalog Number	Article Number	Material	Finish	Quick Ship
P2BGPD124G	34168	Mild Steel	Galvanized, Powder Coated	No
P2BGPD126G	34167	Mild Steel	Galvanized, Powder Coated	No
P2BGPD164G	34172	Mild Steel	Galvanized, Powder Coated	No
P2BGPD166G	34171	Mild Steel	Galvanized, Powder Coated	No
P2BGPD184G	34174	Mild Steel	Galvanized, Powder Coated	No
P2BGPD186G	34173	Mild Steel	Galvanized, Powder Coated	No

## WARNING

nVent products shall be installed and used only as indicated in nVent's product instruction sheets and training materials. Instruction sheets are available at [www.nvent.com](http://www.nvent.com) and from your nVent customer service representative. Improper installation, misuse, misapplication or other failure to completely follow nVent's instructions and warnings may cause product malfunction, property damage, serious bodily injury and death and/or void your warranty.



Our powerful portfolio of brands:

**CADDY ERICO HOFFMAN ILSCO SCHROFF TRACHTE**