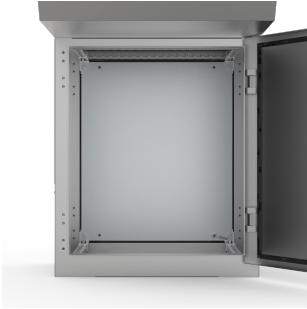


Mounting Plate, CBPZ



The steel mounting plate contributes to speeding up the assembly of the enclosure, since it can be machined easily and equipped with components before being mounted.

FEATURES

Description: Standard mounting plate for MPC(S) base section.

Material: 2 mm galvanized steel.

Pack quantity: 1 plate with mounting accessories.

SPECIFICATIONS

Material: Galvanized Steel
Finish: Plated

Table 1/1					
Catalog Number	Height	Width	Panel Size	Enclosure Material	Quick Ship
CBPZ12	23.23in	47.24in	23.23 x 43.27in	Mild Steel, Stainless Steel	No
CBPZ16	23.23in	62.99in	23.23 x 59.02in	Mild Steel, Stainless Steel	No
CBPZ08	23.23in	31.5in	23.23 x 27.52in	Mild Steel, Stainless Steel	No
CBPZ10	23.23in	39.37in	23.23 x 35.39in	Mild Steel, Stainless Steel	No
CBPZ06	23.23in	23.62in	23.23 x 19.65in	Mild Steel, Stainless Steel	No

WARNING

nVent products shall be installed and used only as indicated in nVent's product instruction sheets and training materials. Instruction sheets are available at www.nvent.com and from your nVent customer service representative. Improper installation, misuse, misapplication or other failure to completely follow nVent's instructions and warnings may cause product malfunction, property damage, serious bodily injury and death and/or void your warranty.



Our powerful portfolio of brands:

CADDY ERICO HOFFMAN ILSCO SCHROFF TRACHTE