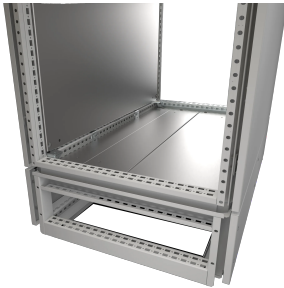


Front/Rear Bottom Frames For Floor Standing Enclosures, PCU



This frame creates additional space in the bottom and can be segregated from the enclosure. It has a universal hole pattern for mounting accessories easily.

FEATURES

Description: For fixing and routing of cables or mounting of busbar. Identical hole pattern to the enclosure's frame makes all relevant accessories (e.g. CLPF, CLPK, etc) possible to mount. Fixed to the base of the enclosure by M12 screws (provided).

Side panels: PCUP supplied as an accessory.

Material: Frame in 1.75 mm steel plate, panels in 1.35 mm steel plate.

Finish: RAL 7035 structured powder coating.

Protection: Complies with IP 55.

Pack quantity: 1 piece with front and back panels including mounting accessories. Add CBP for closing bottom opening.

SPECIFICATIONS

Color: Light Gray
Finish: Plated
Color Code: RAL 7035
Material: Steel

Table 1/1

Catalog Number	Height	Width	Depth	Enclosure Material	Quick Ship
PCU3046R5	11.81in	15.75in	23.62in	Stainless Steel	No
PCU3048R5	11.81in	15.75in	31.5in	Stainless Steel	No
PCU3066R5	11.81in	23.62in	23.62in	Stainless Steel	No
PCU3068R5	11.81in	23.62in	31.5in	Stainless Steel	No
PCU3086R5	11.81in	31.5in	23.62in	Stainless Steel	No
PCU3088R5	11.81in	31.5in	31.5in	Stainless Steel	No
PCU3106R5	11.81in	39.37in	23.62in	Stainless Steel	No
PCU3108R5	11.81in	39.37in	31.5in	Stainless Steel	No
PCU3126R5	11.81in	47.24in	23.62in	Stainless Steel	No
PCU3128R5	11.81in	47.24in	31.5in	Stainless Steel	No

WARNING

nVent products shall be installed and used only as indicated in nVent's product instruction sheets and training materials. Instruction sheets are available at www.nvent.com and from your nVent customer service representative. Improper installation, misuse, misapplication or other failure to completely follow nVent's instructions and warnings may cause product malfunction, property damage, serious bodily injury and death and/or void your warranty.



Our powerful portfolio of brands:

CADDY ERICO HOFFMAN ILSCO SCHROFF TRACHTE