

Flange Mount Disconnect, MCF



The mild steel flange mount disconnect floor standing enclosure range, MCF, is available off the shelf in various sizes. It is equipped with a predefined cut-out, which reduces machining time, on the right hand door, that can be matched with most of the common switches in the market. The enclosure configurations that may be created comply with door interlocking and main switch regulations.

INDUSTRY STANDARDS

UL 508A Listed; Type 12; File No. E92044

cUL Listed per CSA C22.2 No.0, No.0.4, No.14, No.94; Type 12; File No. E92044

NEMA/EEMAC Type 12

IEC 62208 IP55

CE, UK CA, UL, EAC

FEATURES

Material: Frame: 1.5 mm painted steel. Doors: 2 mm painted steel. Rear, roof and side panels: 1.5 mm painted steel. Mounting plate: 3 mm galvanized steel. Bottom plates: 1 mm galvanized steel.

Frame: Seam welded reversed open profiles with 25 mm hole pattern, according to DIN 43660. Including integrated external hole pattern.

Door: Mounted with four hinges. Including door frame with 25 mm hole pattern. Door can not be reversed. Flange door: Surface mounted with hinges, locked from the inside, including universal cut-out.

Rear panel: Fitted by M6 torx screws. Standard facilities for rear door mounting.

Side panels: Supplied as an accessory.

Roof panel: Removable.

Lock: Lock, left door: Espagnolette 4-point locking system. Does not interfere with the enclosure inner space. Standard double-bit lock with 3 mm insert. Standard inserts, cylinders, lift handles and T-handles are available as accessories. Lock, right door: Top and bottom lock with double-bit for easy opening of the door. Double-bit 3 mm insert and 90° movement. Other inserts are available as an accessory.

Bottom plates: Consists of three pieces

Mounting plate: Double folded and adjustable in depth by steps of 25 mm, with the MPD02 accessory. Supplied, attached on the outside of the enclosure packaging.

Earthing: All panels are earthed through their fittings and are equipped with a separate earthing stud.

Finish: RAL 7035 structured powder coating.

Protection: Complies with IP 55 | TYPE 12 | IK 10.

Mounting requirements: Standard delivery ready for combined installation. Sides of the group of combined enclosures must be closed with side panels SPM. The interlocking kit, FMD, is included in standard delivery and compatible with the

most popular electrical switched. To complete the interlocking system for bayed configurations, add FMA, FMB and FMS.

Delivery: Frame with fitted doors, rear panel, roof panel, bottom plates, mounting plate and door frame. Delivery also includes earthing bolts. Delivered on a pallet which is identical to the width of the enclosure to allow baying without removal. All packing material is recyclable.

SPECIFICATIONS

Door Thickness:	14ga
Body Thickness:	16ga
Color:	Light Gray
Material:	Mild Steel
Finish:	Powder Coated
Color Code:	RAL 7035

Table 1/1

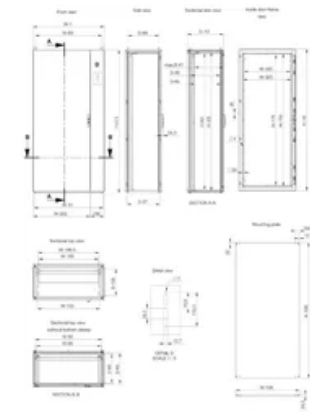
Catalog Number	Article Number	Height (H)	Width (W)	Depth (D)	Mounting Plate Width	Quick Ship
MCF14085R5		55.12in	31.5in	19.69in	27.32in	No
MCF14105R5		55.12in	39.37in	19.69in	35.2in	No
MCF14165R5		55.12in	62.99in	19.69in	58.82in	No
MCF18084R5		70.87in	31.5in	15.75in	27.32in	No
MCF18085R5		70.87in	31.5in	19.69in	27.32in	No
MCF18105R5		70.87in	39.37in	19.69in	35.2in	No
MCF20085R5		78.74in	31.5in	19.69in	27.32in	No
MCF20086R5		78.74in	31.5in	23.62in	27.32in	Yes
MCF20105R5		78.74in	39.37in	19.69in	35.2in	No
MCF20165R5		78.74in	62.99in	19.69in	58.82in	No
MCF22086R5		86.61in	31.5in	23.62in	27.32in	No
MCF22105R5		86.61in	39.37in	19.69in	35.2in	No
MCF22106R5		86.61in	39.37in	23.62in	35.2in	No
MCF18165R5	MCF18165R5	70.87in	62.99in	19.69in		No
MCF20088R5		78.74in	31.5in	31.5in		No

Catalog Number	Article Number	Height (H)	Width (W)	Depth (D)	Mounting Plate Width	Quick Ship
MCF20106R5		78.74in	39.37in	23.62in		No
MCF20166R5		78.74in	62.99in	23.62in		No
MCF18185R5		70.87in	70.87in	19.69in		No
MCF18186R5		70.87in	70.87in	23.62in		No
MCF20185R5		78.74in	70.87in	19.69in		No
MCF20186R5		78.74in	70.87in	23.62in		No

ADDITIONAL PRODUCT DETAILS

SPM mild steel side panels must be ordered separately to close the cabinets (individual or assembled), in order to maintain the protection rating.

DIAGRAMS



WARNING

nVent products shall be installed and used only as indicated in nVent's product instruction sheets and training materials. Instruction sheets are available at www.nvent.com and from your nVent customer service representative. Improper installation, misuse, misapplication or other failure to completely follow nVent's instructions and warnings may cause product malfunction, property damage, serious bodily injury and death and/or void your warranty.



Our powerful portfolio of brands:

CADDY ERICO HOFFMAN ILSCO SCHROFF TRACHTE