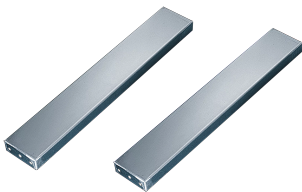


# ProLine G2 Support Bracket Kit, 600mm, Conductive, Steel

## CATALOG NUMBER

**P2ACB6**



Support Brackets cross the depth of a modular enclosure and can be used for additional support for heavy devices mounted on the sides or tops.

## FEATURES

Brackets provide additional support for large air conditioners or other heavy devices that can be mounted on ProLine G2 sides or tops

Can be positioned at various heights to accommodate any size air conditioner or device

Support brackets fit on the sides, top or base (along the depth) to provide two horizontal rigid supports

Furnished in pairs

Installation hardware included

## PRODUCT ATTRIBUTES

Article Number: 30833

Material: Mild Steel

Length: 18in

Weight: 5lb

Finish: Plated

Thickness: 14ga

## WARNING

nVent products shall be installed and used only as indicated in nVent's product instruction sheets and training materials. Instruction sheets are available at [www.nvent.com](http://www.nvent.com) and from your nVent customer service representative. Improper installation, misuse, misapplication or other failure to completely follow nVent's instructions and warnings may cause

product malfunction, property damage, serious bodily injury and death and/or void your warranty.



Our powerful portfolio of brands:

**CADDY   ERICO   HOFFMAN   ILSCO   SCHROFF   TRACHTE**