

nVent ERIFLEX Flexbus IP55 Conductor Entry



nVent ERIFLEX Flexbus IP55 Conductor Entries can be used for switchboard and/or power supply cover to upgrade an installation to IP55 level. Protect the nVent ERIFLEX Flexbus Conductor insulation against sharp edges from power supply or switchboard top cover.

CERTIFICATIONS



FEATURES

Made with soft PVC to follow any potential conductor bending radius

Sealing around the conductor is made by a self-fusing tape with a strong adhesive

Good resistance to solvent and hydrocarbon splashes

Adaptable to any nVent ERIFLEX Flexbus conductor cross section by cutting the top material with traditional cutter

High acid resistance

UV resistance

RoHS compliant

Flame retardant

SPECIFICATIONS

Enclosure Rating:	IP 55
Material:	Polyvinylchloride
Working Temperature:	-40 to 284 °F

Table 1/2

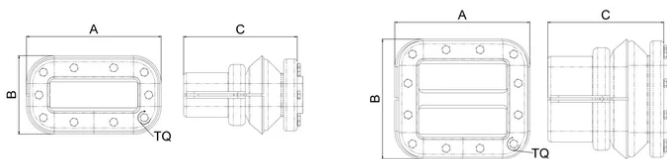
Catalog Number	Article Number	Type	A	B	C	Conductor Size
----------------	----------------	------	---	---	---	----------------

FLEXCEIP55C501	508140	Single Entry	4.96"	4.02"	6.89"	220 mm ² , 360 mm ² , 545 mm ² , 640 mm ²
FLEXCEIP55C1001	508141	Single Entry	6.93"	4.02"	5.98"	960 mm ² , 1280 mm ² , 1810 mm ²
FLEXCEIP55C502	508142	Double Entry	4.96"	6.18"	6.89"	220 mm ² , 360 mm ² , 545 mm ² , 640 mm ²
FLEXCEIP55C1002	508143	Double Entry	6.93"	6.18"	5.98"	960 mm ² , 1280 mm ² , 1810 mm ²

Table 2/2

Catalog Number	Article Number	Torque (TQ)	Unit Weight
FLEXCEIP55C501	508140	1.84 ft·lbf	1.32 lb
FLEXCEIP55C1001	508141	1.84 ft·lbf	1.54 lb
FLEXCEIP55C502	508142	1.84 ft·lbf	1.76 lb
FLEXCEIP55C1002	508143	1.84 ft·lbf	2.2 lb

DIAGRAMS



WARNING

nVent products shall be installed and used only as indicated in nVent's product instruction sheets and training materials. Instruction sheets are available at www.nvent.com and from your nVent customer service representative. Improper installation, misuse, misapplication or other failure to completely follow nVent's instructions and warnings may cause product malfunction, property damage, serious bodily injury and death and/or void your warranty.

North America

+1.800.753.9221

Option 1 – Customer Care

Option 2 – Technical

Support

Europe

Netherlands:

+31 800-0200135

France:

+33 800 901 793

Europe

Germany:

800 1890272

Other Countries:

+31 13 5835404

APAC

Shanghai:

+ 86 21 2412 1618/19

Sydney:

+61 2 9751 8500



Our powerful portfolio of brands:

CADDY

ERICO

HOFFMAN

ILSCO

SCHROFF

TRACHTE