

Plug Bond Track Connector, Signal



FEATURES

Utilized for attachment of bondstrand or solid copper track wires for track connections, fouling circuits, or bonding around the joint splice bar

Hammered into a 3/8" (9.5 mm) diameter hole drilled through the rail web and driven from the same side the hole was drilled

SPECIFICATIONS

Finish: Electrogalvanized;Tinned;Bare

Table 1/2

Catalog Number	Material	Conductor Size	Connector Conductor Size	Length (L)	Diameter 1 (Ø1)	Diameter 2 (Ø2)
SBPAC3A	Copper Alloy, Cadmium Bronze, Carbon Steel	3/16" Bondstrand	3/16" Bondstrand	4 3/4"	3/16"	0.41"
SBPAC3A12	Copper Alloy, Cadmium Bronze, Carbon Steel	3/16" Bondstrand	3/16" Bondstrand	12 3/4"	3/16"	0.41"
SBPAC3B24	Copper Alloy, Cadmium Bronze, Carbon Steel	3/16" Bondstrand	3/16" Bondstrand	24 3/4"	3/16"	0.41"

CatalogNumber	Material	Conductor Size	Connector Conductor Size	Length (L)	Diameter 1(Ø1)	Diameter 2(Ø2)
SBPAC3G	Copper Alloy, Cadmium Bronze, Carbon Steel	3/16" Bondstrand	#6 Solid	4 3/4"	3/16"	0.41"
SBPAC3G12	Copper Alloy, Cadmium Bronze, Carbon Steel	3/16" Bondstrand	#6 Solid	12 3/4"	3/16"	0.41"
SBPAC3R	Copper Alloy, Cadmium Bronze, Carbon Steel	3/16" Bondstrand	#8 Solid	4 3/4"	3/16"	0.41"
SBPAC3Y	Copper Alloy, Cadmium Bronze, Carbon Steel	3/16" Bondstrand	#9 Solid	4 3/4"	3/16"	0.41"
SBPACGBJ34	Stainless Steel 302 (EN 1.4324), Copper Alloy, Cadmium Bronze, Carbon Steel	1/4" Bondstrand	#6 Stranded	35.13"	1/4"	0.41"
SBPACGBJ4	Stainless Steel 302 (EN 1.4324), Copper Alloy, Cadmium Bronze, Carbon Steel	1/4" Bondstrand	#6 Stranded	5.13"	1/4"	0.41"

Table 2/2

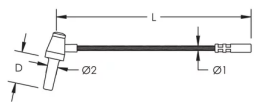
Catalog Number	Depth (D)
SBPAC3A	1 1/4"
SBPAC3A12	1 1/4"
SBPAC3B24	1 1/4"
SBPAC3G	1 1/4"
SBPAC3G12	1 1/4"

Catalog Number	Depth (D)
SBPAC3R	1 1/4"
SBPAC3Y	1 1/4"
SBPACGBJ34	1 1/4"
SBPACGBJ4	1 1/4"

ADDITIONAL PRODUCT DETAILS

Plug Bond Grease (T369) recommended when installing.

DIAGRAMS



WARNING

nVent products shall be installed and used only as indicated in nVent's product instruction sheets and training materials. Instruction sheets are available at www.nvent.com and from your nVent customer service representative. Improper installation, misuse, misapplication or other failure to completely follow nVent's instructions and warnings may cause product malfunction, property damage, serious bodily injury and death and/or void your warranty.

⚠ WARNING: This product can expose you to chemicals including cadmium, which is known to the State of California to cause birth defects or other reproductive harm. For more information go to www.P65Warnings.ca.gov.

North America +1.800.753.9221 Option 1 – Customer Care Option 2 – Technical Support	Europe Netherlands: +31 800-0200135 France: +33 800 901 793	Europe Germany: 800 1890272 Other Countries: +31 13 5835404	APAC Shanghai: + 86 21 2412 1618/19 Sydney: +61 2 9751 8500
---	--	--	--



Our powerful portfolio of brands:

CADDY ERICO HOFFMAN ILSCO SCHROFF TRACHTE