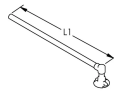
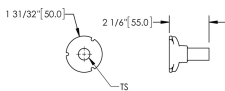


Earthbridge DB, One Stud, Solid Round Steel, 90° Angle



Earthbridges are assemblies made from a high-quality conductive earthpoint (connecting terminal) and various types of conductors. The nVent ERICO Cadweld exothermic connection process is used to combine them together, forming a highly corrosion resistant and long-lasting assembly.

DIAGRAMS



FEATURES

Long-lasting design

Low ground resistance and impedance

Superior electrical conductivity and resistance to corrosion

Electrically and mechanically robust and reliable

Easy to install

SPECIFICATIONS

Material:	Copper;Steel
Earthpoint Type:	DB, One Stud
Conductor Type:	Solid Round Steel, 90° Angle

Table 1/2

Catalog Number	Type	Conductor Size	Length (L)	Diameter (Ø)	Thread Size (TS)	Angle (a)
----------------	------	----------------	------------	--------------	------------------	-----------

DB10K	DBKP	16 mm Diameter Solid	19.69"	1.97"	M10	90 °
DB10KBLK	DBKP	16 mm Diameter Solid	19.69"	1.97"	M10	90 °
DB12K	DBKP	16 mm Diameter Solid	19.69"	1.97"	M12	90 °
DB12KBLK	DBKP	16 mm Diameter Solid	19.69"	1.97"	M12	90 °
DB16K	DBKP	16 mm Diameter Solid	19.69"	1.97"	M16	90 °
DB10K16P050H	DBKP	16 mm Diameter Solid	19.69"	1.97"	M10	90 °
DB10K16P050H G	DBKP	16 mm Diameter Solid	19.69"	1.97"	M10	90 °
DB12K16P050H	DBKP	16 mm Diameter Solid	19.69"	1.97"	M12	90 °
DB12K16P050H G	DBKP	16 mm Diameter Solid	19.69"	1.97"	M12	90 °
DB16K16P050H	DBKP	16 mm Diameter Solid	19.69"	1.97"	M16	90 °

Table 2/2

Catalog Number	Rebar Assembly Type	Hardware Included	Earthbridge Application	Complies With
DB10K	Arc Welding to Rebar	Yes	Tunnel	EN IEC® 62561-1 Class H 100kA
DB10KBLK	Arc Welding to Rebar	Yes	Tunnel	EN IEC® 62561-1 Class H 100kA
DB12K	Arc Welding to Rebar	Yes	Tunnel	EN IEC® 62561-1 Class H 100kA
DB12KBLK	Arc Welding to Rebar	Yes	Tunnel	EN IEC® 62561-1 Class H 100kA
DB16K	Arc Welding to Rebar	Yes	Tunnel	EN IEC® 62561-1 Class H 100kA
DB10K16P050H	Arc Welding to Rebar	Yes	Tunnel	EN IEC® 62561-1 Class H 100kA
DB10K16P050HG	Arc Welding to Rebar	Yes	Tunnel	EN IEC® 62561-1 Class H 100kA

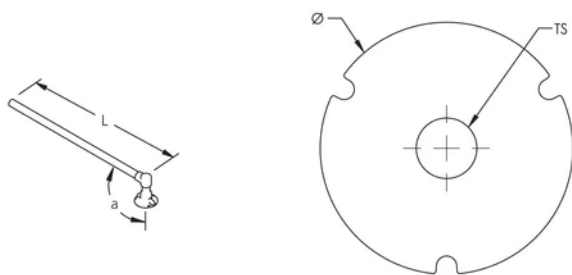
Catalog Number	Rebar Assembly Type	Hardware Included	Earthbridge Application	Complies With
DB12K16P050H	Arc Welding to Rebar	Yes	Tunnel	EN IEC® 62561-1 Class H 100kA
DB12K16P050HG	Arc Welding to Rebar	Yes	Tunnel	EN IEC® 62561-1 Class H 100kA
DB16K16P050H	Arc Welding to Rebar	Yes	Tunnel	EN IEC® 62561-1 Class H 100kA

ADDITIONAL PRODUCT DETAILS

Includes (1) brass bolt, (1) brass washer, (1) plastic cap, and (1) protective label.

DB-16-C-70-S-050-C		
DB	Earth Point	DB: 1 hole BT: 2 holes BF: 4 holes LU: M16 lug TA: tape
16	Thread Size	10: M10 12: M12 16: M16 40: Tape 40x5mm 30: Tape 30x4mm
C	Conductor Type	K: Steel Rond C: Y/G Cable T: Steel Bar F: Steel Bar 4mm N: NYY-O Cable H: N2XH-0 Cable
70	Conductor Size	12: D12mm 16: D16mm 30: 30x4mm 40: 40x5mm 50: 50mm ² 70: 70mm ² 95: 95mm ²
S	Conductor Angle	S: 0° P: 90° A: 45°
050	Length (cm)	xxx
x	Termination (option if cable)	SR: Solid Round EP: Earthpoint perpendicular ES: Earthpoint straight TA: Tape of 100mm TP: Tape of 150mm LU: M16 lug
x	Bolts & Washer	- : No Hardware H: With Hardware
C	Packaging	- : by unit (Made-to-Stock) C: 5 pieces (Made-to-Order) G: 25 pieces (Made-to-Order)

DIAGRAMS



WARNING

nVent products shall be installed and used only as indicated in nVent's product instruction sheets and training materials. Instruction sheets are available at www.nvent.com and from your nVent customer service representative. Improper installation, misuse, misapplication or other failure to completely follow nVent's instructions and warnings may cause product malfunction, property damage, serious bodily injury and death and/or void your warranty.

⚠ WARNING: This product can expose you to chemicals including lead, which is known to the State of California to cause cancer and birth defects or other reproductive harm. For more information go to www.P65Warnings.ca.gov.

North America

+1.800.753.9221
Option 1 – Customer Care
Option 2 – Technical
Support

Europe

Netherlands:
+31 800-0200135
France:
+33 800 901 793

Europe

Germany:
800 1890272
Other Countries:
+31 13 5835404

APAC

Shanghai:
+ 86 21 2412 1618/19
Sydney:
+61 2 9751 8500



Our powerful portfolio of brands:

CADDY ERICO HOFFMAN ILSCO SCHROFF TRACHTE