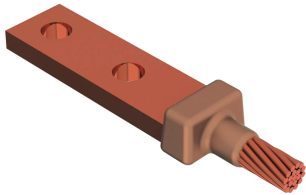
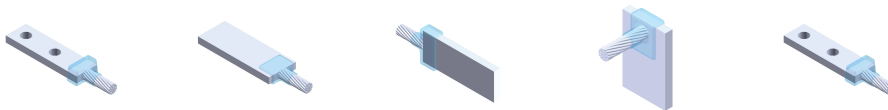


Cable to Lug or Busbar, Rail



nVent ERICO Cadweld applications for railway properties utilize the nVent ERICO Cadweld Plus F80 and the nVent ERICO Cadweld F80 welding material alloys. nVent ERICO Cadweld exothermically welded connections are engineered to provide a permanent, molecular bond that will not loosen or corrode, enabling connection of dissimilar materials. The connections are designed to perform for the life of the conductor and/or installation. The nVent ERICO Cadweld connection has a current carrying capacity equal to or greater than that of the conductor and will withstand repeated fault currents without failing during operation. Once completed, installers can clearly ensure quality by visually inspecting the new connection.

DIAGRAMS



FEATURES

Forms a permanent, low resistance connection

Provides a molecular bond

nVent ERICO Cadweld Exothermic Connections are rated with the same current capacity as the conductor

Portable installation equipment with no external source of power required

Installers can be easily trained to make nVent ERICO Cadweld Exothermic Connections

Connections can be visually inspected

Mold Families LA and LE can be used with straight or offset lugs

SPECIFICATIONS

Table 1/1

Catalog Number	Mold Family	Lug/Busbar Size	Conductor Size	Conductor Outer Diameter, Nominal
PB10LA1GDE	LA	3/16" x 1"	#6 Solid	0.16"

Catalog Number	Mold Family	Lug/Busbar Size	Conductor Size	Conductor Outer Diameter, Nominal
PB10GLCE1H	GL	1/8" x 1"	#6 Concentric	0.18"
PB10LA1HEH	LA	1/4" x 2"	#6 Concentric	0.18"
PB10LA1HEK	LA	1/4" x 3" and wider	#6 Concentric	0.18"
PB10GLEG2G	GL	1/4" x 1 1/2"	2/0 Concentric	0.42"
PB10LA2GEE	LA	1/4" x 1"	2/0 Concentric	0.42"
PB10LA2GEF	LA	1/4" x 1 1/4"	2/0 Concentric	0.42"
PB10PLCE2G	PL	1/8" x 1"	2/0 Concentric	0.42"
PB10GLCES5	GL	1/8" x 1"	19/#9 Copperweld	0.53"
PB10LA2QEG	LA	1/4" x 1 1/2"	4/0 Concentric	0.53"
PB10LAS5CE	LA	1/8" x 1"	2/0 Composite	0.53"
PB10GLEGS6	GL	1/4" x 1 1/2"	3/0 Composite	0.57"
PB10LA2VEG	LA	1/4" x 1 1/2"	250 kcmil Concentric	0.57"
PB10LAS6EE	LA	1/4" x 1"	3/0 Composite	0.57"
PB10LBS6EF	LB	1/4" x 1 1/4"	3/0 Composite	0.57"
PB10GLEE3B	GL	1/4" x 1"	300 kcmil Ropelay	0.8"
PB10LA3BEE	LA	1/4" x 1"	300 kcmil Ropelay	0.8"
PB10GLGG3Q	GL	3/8" x 1 1/2"	500 kcmil Concentric	0.81"
PB10LA3QGH	LA	3/8" x 2"	500 kcmil Concentric	0.81"

Catalog Number	Mold Family	Lug/Busbar Size	Conductor Size	Conductor Outer Diameter, Nominal
PB19ME3QEG	ME	1/4" x 1 1/2"	500 kcmil Concentric	0.81"
PB59ME3QGG	ME	3/8" x 1 1/2"	500 kcmil Concentric	0.81"
PB10LA3FEF	LA	1/4" x 1 1/4"	350 kcmil Ropelay	0.88"
PB10LA3KEG	LA	1/4" x 1 1/2"	400 kcmil Ropelay	0.93"
PB10LA3SJH	LA	1/2" x 2"	500 kcmil Ropelay	1.04"
PB50LA4YJH	LA	1/2" x 2"	10 mm ² Concentric	1.15"
PB50PL3SJH	PL	1/2" x 2"	500 kcmil Ropelay	1.04"
PB10GLEG3S	GL	1/4" x 1 1/2"	500 kcmil Ropelay	1.04"
PB10LA3SEG	LA	1/4" x 1 1/2"	500 kcmil Ropelay	1.04"
PB19ME3SEG	ME	1/4" x 1 1/2"	500 kcmil Ropelay	1.04"
PB10LA4XEK	LA	1/4" x 3" and wider	#24 Ropelay	1.07"
PB10GLGG3S	GL	3/8" x 1 1/2"	500 kcmil Ropelay	1.04"
PB10LA3SGG	LA	3/8" x 1 1/2"	500 kcmil Ropelay	1.04"
PB59ME3SGG	ME	3/8" x 1 1/2"	500 kcmil Ropelay	1.04"
PB50LA5FGH	LA	3/8" x 2"	#24 Ropelay	1.39"

ADDITIONAL PRODUCT DETAILS

For applications such as computer room, tunnel or other low-ventilation areas, specify a smokeless nVent ERICO Cadweld Exolon mold. Add an XL prefix to the standard mold part number when ordering (for example, a PB10GR162G becomes XLPB10GR162G). Similarly, nVent ERICO Cadweld Exolon welding material is also designated by the XL prefix (for example, PB90 becomes XLPB90).

A gap between conductors may be required. See mold tag for more information.

XXXX-XX-XX-XX-L-M-W		
XXXX	Price Key	
XX	Mold Family	
XX	Lug/Busbar Size	
XX	Conductor Size	
L*	Split Crucible	Crucible section is split on molds designed with horizontal opening for easier cleaning
M*	Mold Only	
W*	Wear Plates	Reduce mechanical abrasion of molds at cable entry points

* Empty if none

WARNING

nVent products shall be installed and used only as indicated in nVent's product instruction sheets and training materials. Instruction sheets are available at www.nvent.com and from your nVent customer service representative. Improper installation, misuse, misapplication or other failure to completely follow nVent's instructions and warnings may cause product malfunction, property damage, serious bodily injury and death and/or void your warranty.

North America

+1.800.753.9221
Option 1 – Customer Care
Option 2 – Technical
Support

Europe

Netherlands:
+31 800-0200135
France:
+33 800 901 793

Europe

Germany:
800 1890272
Other Countries:
+31 13 5835404

APAC

Shanghai:
+ 86 21 2412 1618/19
Sydney:
+61 2 9751 8500



Our powerful portfolio of brands:

CADDY ERICO HOFFMAN ILSCO SCHROFF TRACHTE