

Aircraft Grounding Receptacle with Bar Attachment Point



CERTIFICATIONS



FEATURES

Castings for use in static grounding systems of refueling areas

Suitable as a combination tie down and static ground point

Easily connected to grounding system conductor and/or ground rods

Designed for simple installation with flush paved surfaces

Compatible with nVent ERICO Cadweld connections

SPECIFICATIONS

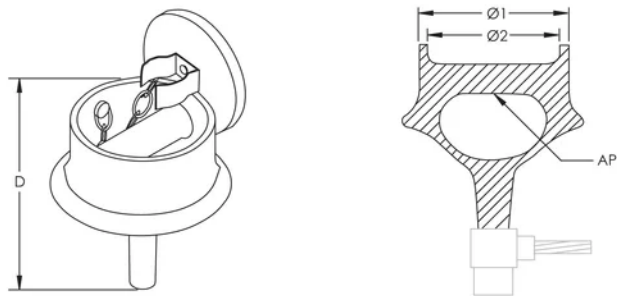
Material: Phosphor Bronze

Table 1/1

Catalog Number	Diameter 1 (Ø1)	Diameter 2 (Ø2)	Depth (D)	Attachment Point (AP)	Pipe Size	Connection Type
B166	3 7/8"	3 1/2"	5 1/4"	3/4" Diameter Bar	1/2"	RA, RB

CatalogNumber	Diameter 1(Ø1)	Diameter 2(Ø2)	Depth (D)	Attachment Point (AP)	Pipe Size	Connection Type
B167	4 3/4"	4 13/32"	7 1/4"	1 1/2" Diameter Bar	1/2"	RA, RB

DIAGRAMS



WARNING

nVent products shall be installed and used only as indicated in nVent's product instruction sheets and training materials. Instruction sheets are available at www.nvent.com and from your nVent customer service representative. Improper installation, misuse, misapplication or other failure to completely follow nVent's instructions and warnings may cause product malfunction, property damage, serious bodily injury and death and/or void your warranty.

⚠ WARNING: This product can expose you to chemicals including lead, which is known to the State of California to cause cancer and birth defects or other reproductive harm. For more information go to www.P65Warnings.ca.gov.

North America

+1.800.753.9221
Option 1 – Customer Care
Option 2 – Technical Support

Europe

Netherlands:
+31 800-0200135
France:
+33 800 901 793

Europe

Germany:
800 1890272
Other Countries:
+31 13 5835404

APAC

Shanghai:
+ 86 21 2412 1618/19
Sydney:
+61 2 9751 8500



Our powerful portfolio of brands:

CADDY ERICO HOFFMAN ILSCO SCHROFF TRACHTE