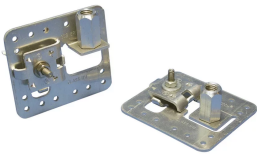


Air Terminal Base, Stamped Adjustable, Imperial Thread



CERTIFICATIONS



FEATURES

For use on flat, vertical or sloping surfaces

Air terminal support tab is field adjustable, eliminating the need for swivel adaptors

Available pre-configured for vertical applications

Install with adhesive or screw down fixings

Positive single bolt tension for multi-directional cable clamping

SPECIFICATIONS

Conductor Size, UL: Class 1 - Class 2 (4/0 Max)

Table 1/2

Catalog Number	Material	Finish	Thread Size (TS)	Type	Hole Size (HS)	Depth (D)
LPA30212	Aluminum		1/2" UNC	Flat	9/32"	3 1/2"

CatalogNumber	Material	Finish	Thread Size (TS)	Type	Hole Size (HS)	Depth (D)
LPA30212V	Aluminum		1/2" UNC	Vertical	9/32"	3 1/2"
LPA30258	Aluminum		5/8" UNC	Flat	9/32"	3 1/2"
LPA30258V	Aluminum		5/8" UNC	Vertical	9/32"	3 1/2"
LPC30212	Bronze, Brass		1/2" UNC	Flat	9/32"	3 1/2"
LPC30212V	Bronze, Brass		1/2" UNC	Vertical	9/32"	3 1/2"
LPC30238	Bronze, Brass		3/8" UNC	Flat	9/32"	3 1/2"
LPC30238V	Bronze, Brass		3/8" UNC	Vertical	9/32"	3 1/2"
LPC30258	Bronze, Brass		5/8" UNC	Flat	9/32"	3 1/2"
LPC30258V	Bronze, Brass		5/8" UNC	Vertical	9/32"	3 1/2"
LPC302L12	Bronze, Brass	Tinned	1/2" UNC	Flat	9/32"	3 1/2"
LPC302L12V	Bronze, Brass	Tinned	1/2" UNC	Vertical	9/32"	3 1/2"
LPC302L38	Bronze, Brass	Tinned	3/8" UNC	Flat	9/32"	3 1/2"
LPC302L38V	Bronze, Brass	Tinned	3/8" UNC	Vertical	9/32"	3 1/2"
LPC302L58	Bronze, Brass	Tinned	5/8" UNC	Flat	9/32"	3 1/2"
LPC302L58V	Bronze, Brass	Tinned	5/8" UNC	Vertical	9/32"	3 1/2"
LPC302M16	Bronze, Brass		M16	Flat	9/32"	3 1/2"

Table 2/2

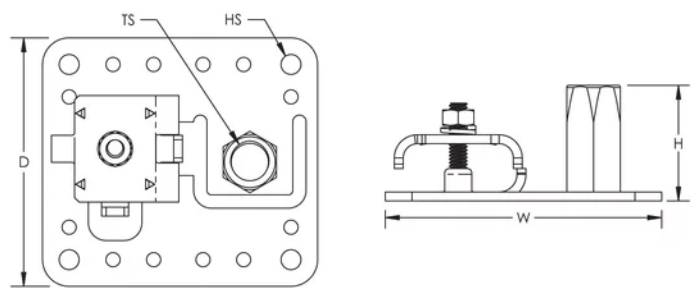
Catalog Number	Height (H)	Width (W)
LPA30212	1 3/8"	4"

Catalog Number	Height (H)	Width (W)
LPA30212V	1 3/8"	4"
LPA30258	1 3/8"	4"
LPA30258V	1 3/8"	4"
LPC30212	1 3/8"	4"
LPC30212V	1 3/8"	4"
LPC30238	1 3/8"	4"
LPC30238V	1 3/8"	4"
LPC30258	1 3/8"	4"
LPC30258V	1 3/8"	4"
LPC302L12	1 3/8"	4"
LPC302L12V	1 3/8"	4"
LPC302L38	1 3/8"	4"
LPC302L38V	1 3/8"	4"
LPC302L58	1 3/8"	4"
LPC302L58V	1 3/8"	4"
LPC302M16	1 3/8"	4"

ADDITIONAL PRODUCT DETAILS

Vertical type bases are factory pre-configured for vertical mount applications.

DIAGRAMS



WARNING

nVent products shall be installed and used only as indicated in nVent's product instruction sheets and training materials. Instruction sheets are available at www.nvent.com and from your nVent customer service representative. Improper installation, misuse, misapplication or other failure to completely follow nVent's instructions and warnings may cause product malfunction, property damage, serious bodily injury and death and/or void your warranty.

⚠ WARNING: This product can expose you to chemicals including lead, which is known to the State of California to cause cancer and birth defects or other reproductive harm. For more information go to www.P65Warnings.ca.gov.

North America

+1.800.753.9221
Option 1 – Customer Care
Option 2 – Technical
Support

Europe

Netherlands:
+31 800-0200135
France:
+33 800 901 793

Europe

Germany:
800 1890272
Other Countries:
+31 13 5835404

APAC

Shanghai:
+ 86 21 2412 1618/19
Sydney:
+61 2 9751 8500



Our powerful portfolio of brands:

CADDY ERICO HOFFMAN ILSCO SCHROFF TRACHTE