

# 2 Hole Undercut Lug



## FEATURES

Provides an efficient bolting surface for grounding and power applications

Electrolytic grade copper

## SPECIFICATIONS

**Material:** Copper

**Finish:** Tinned

Table 1/2

Catalog Number	Length (L)	Width (W)	Thickness (T)	A	B	C
B242JG	4 1/2"	1 1/2"	1/2"	3/4"	1 3/4"	1/4"
B242JH	4 1/2"	2"	1/2"	3/4"	1 3/4"	0.38"
B242JK	3"	3"	1/2"	1"	1 3/4"	1/4"

Table 2/2

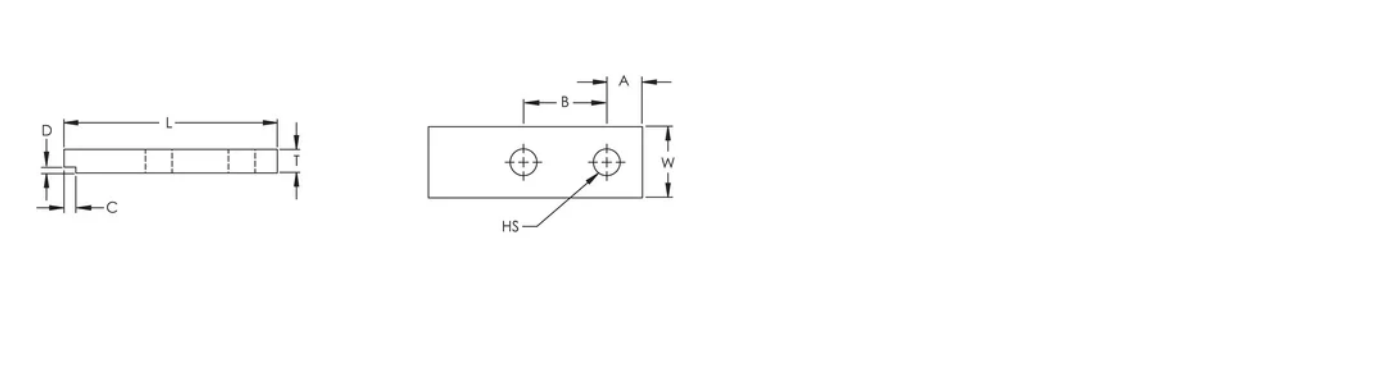
Catalog Number	D	Hole Size (HS)	Equivalent Conductor Size
B242JG	0.12"	0.56"	954.75kcmil
B242JH	0.12"	0.56"	1273kcmil

Catalog Number	D	Hole Size (HS)	Equivalent Conductor Size
B242JK	0.12"	0.56"	1909.5kcmil

### ADDITIONAL PRODUCT DETAILS

For sizes not listed, contact us.

### DIAGRAMS



### WARNING

nVent products shall be installed and used only as indicated in nVent's product instruction sheets and training materials. Instruction sheets are available at [www.nvent.com](http://www.nvent.com) and from your nVent customer service representative. Improper installation, misuse, misapplication or other failure to completely follow nVent's instructions and warnings may cause product malfunction, property damage, serious bodily injury and death and/or void your warranty.

#### North America

+1.800.753.9221  
Option 1 – Customer Care  
Option 2 – Technical  
Support

#### Europe

Netherlands:  
+31 800-0200135  
France:  
+33 800 901 793

#### Europe

Germany:  
800 1890272  
Other Countries:  
+31 13 5835404

#### APAC

Shanghai:  
+ 86 21 2412 1618/19  
Sydney:  
+61 2 9751 8500



Our powerful portfolio of brands:

CADDY   ERICO   HOFFMAN   ILSCO   SCHROFF   TRACHTE